

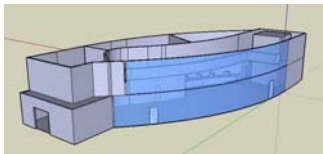
ACE Mentor Program of Washington

2006-2007 Year-in-Review



The ACE Mentor Program of Washington had a successful 2006-2007 school year!

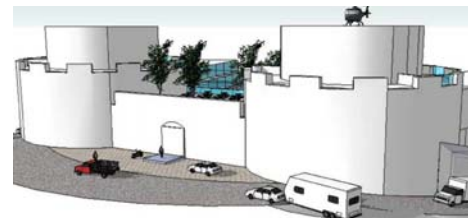
Our fall recruitment drive saw impressive numbers of students applying for the program. More than 135 applicants were assigned to 6 different teams. The year began with 92 professional mentors which assumed leadership of two Tuesday teams, a Tuesday Eastside team, two Wednesday teams, and a Thursday night team. This year's students represented from 19 different high schools, including not just ACE's central core of Seattle Public Schools, but schools as far north as Edmonds-Woodway High School, as far west as Central Kitsap High School in Bremerton, and as far east as Skyline High School.



Tuesday Team 1, led by Fred Jala of The Berger Partnership, renamed themselves "SLUG" or the "South Lake Union Group." Their project, "S.L. Universe," is a South Lake Union community center. Inspired by the elliptical shape of a galaxy of stars, the students created a central outdoor amphitheater around which all other programming elements would circle, namely a library, athletics facilities, kitchen, meeting space, and more. The site of the project is the Seattle Times parking lot.

Tuesday Team 2, the largest team with 21 students finishing the program, was led by Michael Pipta of Callison. The team designed an Environmental Learning Center at Warren G. Magnuson Park. The team chose the site because of its suburban, waterfront location, and used recent Seattle libraries for architectural inspiration. For a total of \$8.4 million, the two-building center could be a reality! During design, the team made several site visits, including to the SLU Discovery Center and the University of Washington Medicine Lake Union construction site.

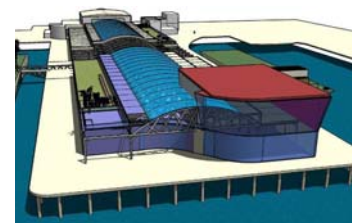
Andrew MacDonald of Freiheit & Ho Architects led the Eastside Team as they designed a Backside Ski Lodge at Stevens Pass. This year's smallest team, with 8 students finishing, used spots like the REI Flagship in Seattle and the SeaTac Airport glass wall as inspiration for its medieval-castle-themed lodge. The team's mechanical engineering group was particularly creative, opting to design a "geothermal heat pump," using the Earth's natural temperature to heat the building in the winter and cool it in the summer.



Wednesday Team 1 was led by Brady Barkey of Ron Wright & Associates/Architects. After building skyscrapers with plastic stirring sticks and gum drops and long-span bridges with sheets of paper, the team was prepared to design a two-building Community Center in South Lake Union. The project is complete with an indoor/outdoor theater, athletic facilities, kitchen, music room, and a green courtyard with foundations, gardens, and bicycle racks – and more. An architecturally unique glass breezeway colonnade/canopy connects the two buildings of the project.

Led by Chris Grammens of LMN Architects, Wednesday Team 2 developed a communal living "sorority/fraternity" project on the Lake Union waterfront in Wallingford. In fact, the building has an impressive cantilever out over the water. Amenities for those living in the 450 dormitory-style residential units include a rec room, media room, dining hall, library, Jacuzzi/pool, and basketball/tennis/volleyball courts. The team was the only one to make a physical model of their project, which could be built life-sized for \$10.2 million.

"Peers on Piers" was the adopted name of the Thursday team, which met in Mithun's pier office on Alaskan Way. Casey Riske led the team as they designed an artists' retreat on Seattle's Pier 48, circa 1901. Programming includes common studio space (with metal, wood, and pottery shops, among others), as well as housing and gallery areas. The project featured several sustainable and green elements, such as a rooftop garden, "nature barge" with additional green space floating beside the project, and airborne wind turbines.



ACE Mentor Program of Washington

2006-2007 Year-in-Review



All six groups presented these final projects on May 23 in Kane Hall at the University of Washington for ACE's annual Student Presentation Night. Approximately 85 students finished the program.

Another of the year's main highlights was this year's Scholarship Breakfast, held May 11, where eight seniors were awarded \$23,000 in scholarships from funds donated by 32 local A/E/C firms.

This year's scholarship winners are as follows:

- **Lisa Verzemnieks**, this year's top applicant, received the American Council of Engineering Companies of Washington's \$5,000 ACE scholarship and a \$2,500 McGraw-Hill ACE Scholarship from the ACE Mentor Program of America (ACE National). This is only the second year an ACE Seattle student has won an ACE scholarship in the national competition. Lisa will study civil/structural engineering at University of Southern California next fall, after graduating from Holy Names Academy. She also plays soccer and runs track.
- **Melissa Street** will study mechanical engineering at Washington State University in the fall. A soon-to-be-graduate of Bishop Blanchet High School, she was awarded a \$3,000 ACE Scholarship. Melissa enjoys many extracurricular activities, including band, choir, piano, dance, and volleyball.
- Coming from Edmonds-Woodway High School for ACE and interning at Weber+Thompson have helped **Ben-Hait Campbell**, 18, discover a profound interest in architecture. He plans to study it and perhaps construction management at California Polytechnic State University, with the help of the \$2,500 Turner Construction ACE Scholarship. Ben has won awards for his vocational architectural drafting skills and also enjoys soccer.
- **Alexandra Hooper**, 18, is so eager to get started studying architecture that she participated in an architecture summer camp at the University of Southern California last year. After graduating from Roosevelt High School, Alex will study architecture/interior design at University of Oregon. Today, she is receiving the \$2,000 Callison ACE Scholarship. Alex also likes painting and tennis.
- **Justine Woo**, 18, has been awarded the \$2,000 Lease Crutcher Lewis ACE Scholarship. She will graduate from Holy Names Academy and plans to attend St. Martin's University in Lacey to study civil engineering. Justine's hobbies include sailing, dancing, and martial arts.
- This is also 18-year-old **Richard Randecker's** third year in ACE. He will graduate from O'Dea High School and will study mechanical or electrical engineering at Washington State University, with the help of a \$2,000 ACE Scholarship. He has been involved in Esperanza, a program at O'Dea that takes students to Tijuana, Mexico, to build homes for less fortunate families. Richard is also a member of the National Honor Society, and enjoys soccer and wrestling.
- **Tomas Sadilek**, 18, is a senior at Roosevelt High. With the help of the \$2,000 Sellen Construction ACE Scholarship, he will study materials science or civil engineering at University of Washington. This is Tomas' third year in ACE. His interests include skiing, playing guitar, and drawing, and he is also a youth soccer referee.
- **Jacob Trieu**, 18, will graduate from Edmonds-Woodway High School and will attend University of Washington to study architecture and/or structural engineering, with the help of the \$2,000 Magnusson Klemencic Associates ACE Scholarship. Jacob is in the National Honor Society and coaches a kids' wrestling team.

ACE Mentor Program of Washington

2006-2007 Year-in-Review



Here's what other students are saying about ACE:

"The ACE program gave me a clear idea of the various engineering fields and those that are involved in the building industry. The mentors are great. They answered any questions I had as well as explained what they do every day. The mock project allowed me to practice the techniques of engineering through a hands-on project. I loved it." – Lisa Verzemnieks, Holy Names Academy senior and ACE Scholarship Winner

"I will do ACE again next year, I had a great time. I definitely think it was worth the time and the money, because it not only gave me experience but, it gave me 'connections.' My team was a lot of fun." – ACE student Greg Bastien, Central Kitsap High School sophomore, who came to Seattle on the ferry for each ACE meeting

"Participation in the ACE program helped shape my vision for the future. I entered the program with no expectations about what it was going to be like, and I was surprised and what an incredibly fantastic resource it has become." – Ben Hait-Campbell, Edmonds-Woodway High School senior and ACE Scholarship Winner

"For me, ACE has been most helpful because it taught me the difference between architecture, construction, and engineering, all subjects I have been interested in. It has also provided me with great contacts and has been a great learning experience that I couldn't have gotten anywhere else." Spencer O'Neal, Garfield High School senior

"I feel that the ACE Mentoring Program has been something that has been extremely influential in helping me choose what I want to do with the rest of my life. ACE has allowed me to see what the everyday routine of an architect is like." – ACE student Adam Schreiber, Edmonds-Woodway High School senior

Local firms that contributed to this year's ACE program are as follows:

Donor Support

\$5,000+

ACEC Washington

\$2,000 - \$4,999

Callison

Lease Crutcher Lewis

Magnusson Klemencic Associates

Sellen Construction

Turner Construction

\$1,000 - \$1,999

Affiliated Engineers, Inc.

Andersen Bjornstad Kane Jacobs

D'amato Conversano, Inc.

KPFF Consulting Engineers

LMN Architects

Mithun

Reid Middleton

Skanska USA

\$500 - \$999

AGC Education Foundation

Berger Partnership

CT Engineering

Degenkolb

Freiheit & Ho Architects

JPC Architects

Lucky Seven Organization

M.A. Mortenson

McKinstry

Notkin Engineering

Parsons Brinckerhoff

Perkins + Will

PCL Construction

Ron Wright & Associates

Shannon & Wilson

Sparling

Structural Engineers Association of
Washington

W&H Pacific

Wood/Harbinger

Mentor Firms

Affiliated Engineers, Inc.

Bassetti Architects

Berger Partnership

Callison

CT Engineering

D'amato Conversano, Inc.

Freiheit & Ho

JPC Architects

KPFF Consulting Engineers

LMN Architects

Macdonald-Miller

Magnusson Klemencic Associates

McKinstry

Mithun

MulvannyG2

NBBJ

Notkin Engineering

Parsons Brinckerhoff

PCL Construction

Ron Wright & Associates

Sabey Construction

Sellen Construction

Skanska USA

Sparling

Turner Construction

Yantis Acoustical Design