

ACE Mentor Program of Washington 2007-2008 Year-in-Review

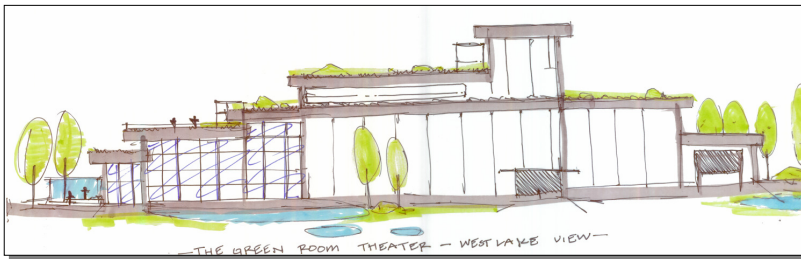


The ACE Mentor Program of Washington had a successful 2007-2008 school year!

Our fall recruitment drive saw impressive numbers of students applying for the program. ACE anticipated having six teams – five in Seattle and one for the Eastside – but after overwhelming support and interest from Eastside students, ACE’s mentor recruiters scrambled and put together a seventh team, a second Eastside team.

This year’s students represented from 31 different high schools, including not just ACE’s central core of Seattle Public Schools, but schools as far north as Snohomish High School, as far west as Central Kitsap High School in Bremerton, and as far east as Redmond High School.

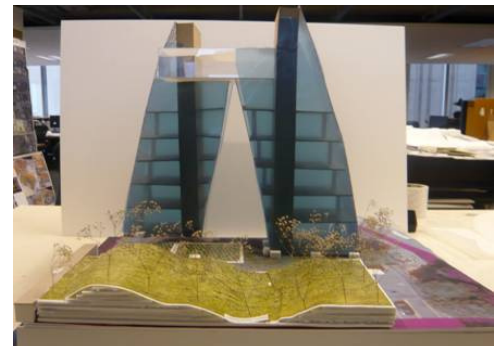
Tuesday Team 1 was led by Kevin Neal of NBBJ Architects. The team designed a multi-level seafood restaurant in South Lake Union for Tom Douglas. The waterfront location captured views of South Lake Union and housed two distinct dining spaces, “Diving Fish” and “O-Bar”. In keeping with the theme, the O-Bar featured a cascading waterfall wall. The estimated budget for the project was \$8.7 million



Tuesday Team 2 was led by Paul Miskel of Turner Construction. The team designed a Green Room Theater at Denny and Westlake in South Lake Union. Working with clients from the Seattle theater community, the team developed a seashell-shaped theater that pushed the boundaries of theater design yet kept to their original goal of environmentally friendly design.

Landscaping became a key element to their “green feel,” with multiple green roofs and outdoor storage of reusable gray water.

Miriam Gee and Jessica Nelson of LMN Architects led the Wednesday Team. They designed a seven-story hostel and restaurant on the downtown waterfront. Their bold building design was inspired by a wave theme which they mirrored in the undulating landscape. The team also focused on sustainability, incorporating design elements such as natural ventilation, a double wall cavity cladding system, wind turbines, photovoltaic roof panels and geothermal energy.

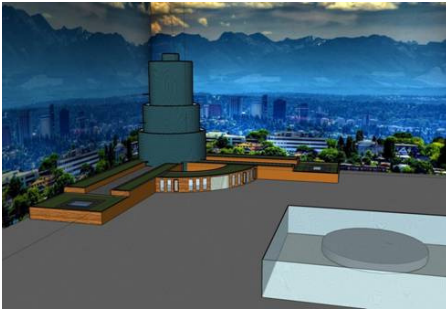


The Thursday team, led by Eileen Gueringer of Ron Wright & Associates/Architects, designed an airport in Whistler, British Columbia, for the 2010 Olympics. They evaluated the building program with input from a local pilot and aviation architect. After experimenting with several building sections, they decided on using a model of a Wright Brothers bi-plane as inspiration for their design. The team incorporated a log cabin theme to reflect the natural surroundings of the site.

“Purity” was the adopted name of the Thursday Night Team, which met in Mithun’s pier office on Alaskan Way. Casey Riske led the team as they designed an intergenerational and cross-cultural community in South Seattle. The site included terraced public parks, a cultural center, high density housing, transportation, retail and commercial towers. The project featured several sustainable elements such as rooftop gardens, dense living, recycled building materials, alternative transit options, and harnessing human generated energy.

ACE Mentor Program of Washington

2007-2008 Year-in-Review



The Thursday Eastside Team designed The Verona at Lake Bellevue under the leadership of Jamie Love from Freiheit & Ho Architects. Conveniently located at 120th and Bel-Red road, the project included a trendy upscale mall, five-star hotel, and indoor water park. Marketed as a family-friendly destination spot, the project listed a construction schedule of approximately one year for an estimated cost of \$427 Million.

The Wednesday Eastside Team was led by Mike Jones of JPC Architects. Their team proposed the renovation of an old airplane hangar into a sports facility at Magnusson Park. The proposed facility adds site features such as trails, a boat launch, picnic areas, grass fields, tennis courts, kids play area and a new dock. The site will also take advantage of views alongside Lake Washington. The building pays homage to its historic use as a plane hangar with the name of "Club B27" and an actual B27 to serve as an historic monument.

The five Seattle groups presented their final projects on May 21 in Kane Hall at the University of Washington for ACE's annual Student Presentation Night, while the two Eastside teams presented their projects on the same night at the Bellevue Regional Library. This year, 142 students finished the ACE program, guided by 111 mentors.

Another of the year's main highlights was this year's Scholarship Breakfast held May 9, where 12 seniors were awarded \$35,000 in scholarships from funds donated by local A/E/C firms. ACE later learned that one of the year's scholarship winners was also awarded a scholarship at the National level, the \$2,000 Deep Foundation Institute Scholarship.

ACE Mentor Program of Washington 2007-2008 Year-in-Review



This year's scholarship winners are as follows:

- **Ian Absher**, who received the \$2,000 Sparling ACE scholarship, completed his *fourth year* of ACE. After graduation from Ballard High School, Ian is planning to study electrical engineering at Seattle University next year. He also enjoys golf, swimming and tennis.
- **Kimberly Busted** received the \$2,500 Turner Construction ACE Scholarship and the \$2,000 Anning Johnson ACE Scholarship. Kimberly will study civil engineering at Washington State University after graduating from Ballard High School. At school, Kim has earned three varsity letters and was involved in Project Lead the Way and the Technology Students Association.
- **Spencer Gray** is planning to kick off his architecture or construction management studies at Bellevue Community College next year after graduating from Chief Sealth High School. Spencer was awarded the \$2,000 Lease Crutcher Lewis ACE scholarship. In addition to "building stuff", Spencer also enjoys riding Harleys, drawings, and cooking.
- Interested in civil engineering, **Carmen Kwan** will attend the University of Washington after graduating from Roosevelt High School. She received the \$2,000 Malsam Tsang Engineering ACE scholarship. Carmen runs cross-country for Roosevelt and participates in the Japanese Club.
- Receiving the \$2,000 LMN Architects ACE Scholarship, **Stephanie Lundberg** will study architecture at the University of Washington in the fall. At Holy Names Academy, she played varsity volleyball and was an officer for the Student Ambassadors.
- With the help of the \$2,000 Callison ACE Scholarship, **Sophie Ramer** of Roosevelt High School plans to attend Bellevue Community College next year to kick off her architecture studies. When not doing ACE, Sophie can be found working at a Specialty's Café and Bakery or volunteering at Children's Hospital.
- **Tyler Sobczek** of Inglemoor High School received a \$2,000 ACE Mentor Program of Washington Scholarship. Next year he will study civil engineering at the University of California Los Angeles. He enjoys theater, plays tennis, and tutors math students.
- This year's top applicant, **Ian Story** of Lake Washington High School received the \$2,000 Miller/Hull ACE Scholarship and the \$3,000 Sellen Construction ACE Scholarship. Both will help in his architecture studies at the University of Washington. Ian ran track and was on the chess team at LWHS.
- **Shurui Sun** of Roosevelt High School plans to study civil or chemical engineering at the University of Washington this fall. He received the \$2,500 Expert Drywall ACE Scholarship and the \$2,000 Magnusson Klemencis Associates ACE scholarship. Shurui speaks fluent Chinese, wrote for the school newspaper, and enjoys computer drafting.
- **Marcus Timo** received this year's \$5,000 American Council of Engineering Companies of Washington Paul Masten scholarship, which will aid him in his civil or electrical engineering studies at Oregon State University next year. Marcus was a member of the National Honor Society at Ballard High School. He enjoys ultimate Frisbee and plays piano.
- Planning to study industrial design at Pratt Institute in Brooklyn, New York, **Will Van Zee** of Ballard High School received the \$2,000 Flack + Kurtz Scholarship. Will is also active in the Boy Scouts (and has earned his Eagle!), plays electric bass guitar, and enjoys biking.
- After receiving a \$2,000 ACE Mentor Program of Washington Scholarship, **Marta Wang** of Holy Names Academy will study civil engineering at the University of Washington next year. Marta also received the \$2,000 Deep Foundation Institute scholarship from ACE National. Marta is a three-year volunteer at the Seattle Aquarium, enjoys art, and was active in her school's French Club.

ACE Mentor Program of Washington

2007-2008 Year-in-Review



Local firms that contributed to this year's ACE program are as follows:

Donor Support

\$5,000+

ACEC Washington

\$2,000 - \$4,999

Anning Johnson
Callison
Expert Drywall
Flack + Kurtz
Jon D. Magnusson
Lease Crutcher Lewis
LMN Architects
Malsam Tsang Engineering
Miller/Hull Partnership
Magnusson Klemencic Associates
Sparling
Sellen Construction
Turner Construction

\$1,000 - \$1,999

Affiliated Engineers, Inc.
Andersen Bjornstad Kane Jacobs
D'amato Conversano, Inc.
Degenkolb
Hos Bros Construction
KPF Consulting Engineers
McKinstry
Mithun
Prime Electric
Shannon & Wilson
Skanska USA

\$500 - \$999

AGC Education Foundation
Bassetti Architects
Berger Partnership
Cochran, Inc.
CT Engineering
Coughlin Porter Lundeen
DBM Contractors
Freiheit & Ho Architects
GGLO
Hermanson Company
Hoffman Construction
Holmes Electric
Howard S. Wright Constructors
JPC Architects
M.A. Mortenson
Notkin Engineering
Rushing Company
Sparling
Structural Engineers Association of
Washington
Snelson Companies
Wood Harbinger

Mentor Firms

Affiliated Engineers, Inc.
Arup
Berger Partnership
Callison
Cary Kopczynski and Company
CT Engineering
D'amato Conversano, Inc.
Degen & Degen
Degenkolb
Freiheit & Ho
Gates Foundation
Hoshide Williams
JPC Architects
KPF Consulting Engineers
LMN Architects
Macdonald-Miller
Magnusson Klemencic Associates
McKinstry
Mithun
Mortensen
Mulvanny G2
NBBJ
Olsen Sundbert Kundig Allen
PCL Construction
Ron Wright & Associates
Rushing Company
Seattle Department of Planning
and Development
Sellen Construction
Skanska USA
Sparling
The Transpo Group
Turner Construction
Wood Harbinger