

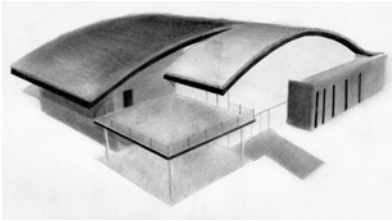
ACE Mentor Program of Washington 2008-2009 Year-in-Review



The ACE Mentor Program of Washington had a successful 2008-2009 school year!

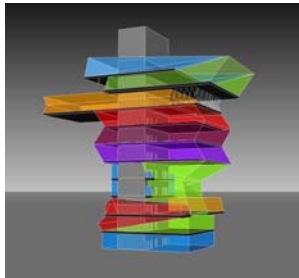
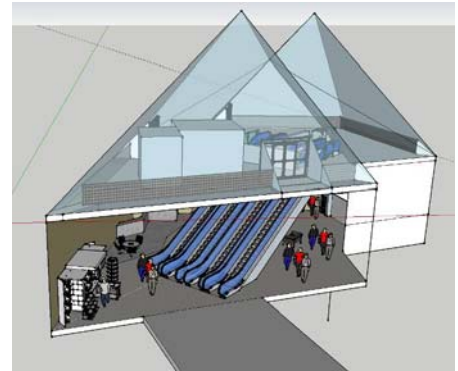
Our fall recruitment drive saw impressive numbers of students applying for the program. ACE anticipated having seven teams – five in Seattle and two for the Eastside – but after overwhelming support and interest from Eastside students, ACE’s mentor recruiters scrambled and put together a ninth team, a third Eastside team.

This year’s students represented 36 different high schools, including not just ACE’s central core of Seattle Public Schools, but schools as far north as Lynnwood, south as Tacoma, east at North Bend, and west as Kingston.



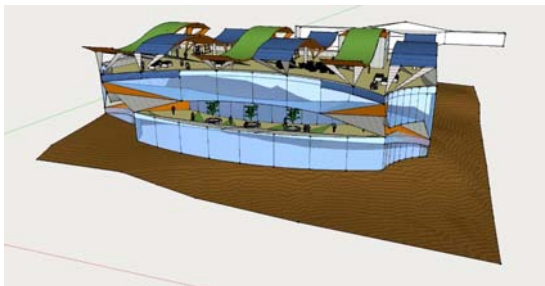
Tuesday Team 1 was led by Paul Miskel, Darin Postma, and Nancy Thompson of Turner Construction. After touring the Seattle Aquarium and meeting with a client, the team decided to design a two-level aquarium for Brown Island in the San Juan Islands in northern Washington. The project features building cooling pumps that use water from around the island, and the project could be built for \$54 million.

Tuesday Team 2, led by Kevin Neal and Chris Hong of NBBJ, designed three subway stations for a new Seattle Subway system. The team divided into three sub-teams to tackle the three stations: Westlake Center, Space Needle, and Capitol Hill. The team explored subways around the world for inspiration, and tackled street level, mezzanine, and platform designs for each station.



Dawn Marie Polak of LMN Architects led Wednesday Team 1, which designed the “ICE,” the Interbay Center of Entertainment, an indoor ski and spa resort in Seattle. The 10-level resort was designed with the goal of LEED certification, focusing on indoor environmental quality, sustainable sites, and energy & atmosphere. The building could be open to the public by November 2011.

Wednesday Team 2, with team leader Brad Walsh of Sellen Construction, dubbed themselves “ACE – Amazingly Creative Environmentalists,” and designed a series of portable classroom buildings for Seattle. For inspiration they toured the South Lake Union Discovery Center, a deconstructable building. Their final design, a circular learning center with modular floor panels, was completely powered with self-generated sustainable energy.

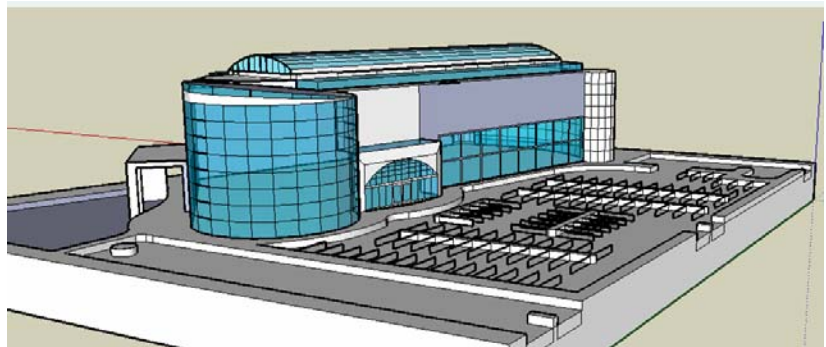


Thursday Team 1 designed a “Multi-Cultural Center/City Escape” at Pike Place Market in Seattle under the direction of Michael Pipta at Callison. The team worked under several design constraints, such as height restrictions and Historic District guidelines, to create a facility to seamlessly expand and celebrate the Market. The project features an architecturally interesting roof canopy, and could be finished construction by the end of 2010 for just \$24.6 million.

ACE Mentor Program of Washington 2008-2009 Year-in-Review



Thursday Team 2, led by Casey Riske of Mithun, also tackled a Pike Place Market expansion, with "Waterfront Integration – Linking the Market to the Waterfront." The team worked on several activities to get the ideas going, including the AGC's Espresso Stand building project and ASCE's Popsicle Stick Bridge competition. Their design features a 10-story retail/apartment/community center tower on Alaskan Way with a pedestrian bridge going over the viaduct to the market, and another going over Alaskan to the waterfront.



The Tuesday Eastside Team was led by Jessica Jenness of DCI Engineers. The team's project, "Bellevue Community Aquatic Center," is an Olympic-sized pool and diving facility to serve the Eastside. The team had a great experience creating a foam model, chipboard model, and Sketch-Up model of the project. The project features lots of glass, can achieve LEED Gold, would only cost \$26.1 million, and could be built in 7 months.



Joe Palmquist of Freiheit & Ho Architects led Wednesday Eastside Team 1 in its design of "The Mountain Daycare" in Redmond. As the project features many outdoor spots for children, much thought went into designing the landscape and using native, hearty Northwest plants. The project features many sustainable elements to earn LEED Gold.

The final ACE team, Wednesday Eastside Team 2, was led by Carole Turley of The Transpo Group. Their project, "Cleary Plaza" is a nightclub/restaurant building in Redmond. The team did a traffic study of the site, where they counted cars, estimated how many spaces would be needed, designed the parking lot, and brainstormed ways to reduce parking needs. The final project budget was \$10.2 million.

The Seattle groups presented their final projects on May 20 at the University of Washington Physics and Astronomy Buildings for ACE's annual Student Presentation Night, while the Eastside teams presented their projects on the same night at the Bellevue High School library. This year, 175 students from 36 area high schools finished the ACE program, guided by more than 130 mentors from 42 firms.

Another of the year's main highlights was this year's Scholarship Breakfast held May 8, where 12 seniors were awarded \$35,000 in scholarships from funds donated by local A/E/C firms. Of the 39 firms that donated to ACE this year, 11 were first-time supporters.

ACE Mentor Program of Washington

2008-2009 Year-in-Review



This year's scholarship winners are as follows:

- **Thomas "TJ" Bandrowski** is a senior at Academy Northwest, an affiliate of Family Academy which assists homeschooling families. TJ lives in Kingston and takes the ferry for every ACE meeting! He will attend University of Idaho to study architecture with the help of the \$2,000 Tetra Tech ACE Scholarship.
- **Nuzulita Budhiari's** hobbies of drawing, sketching, and making models will come in handy as she studies civil or environmental engineering at the University of Washington next year. Nuzulita, a Roosevelt High School senior, received the \$2,000 Skanska ACE Scholarship.
- Receiving the \$2,000 Lease Crutcher Lewis scholarship is **Daniel Dorres**, another Roosevelt senior. He is planning to attend Quest University Canada to study construction management, with a focus on green building. Daniel also runs track and enjoys skateboarding.
- **Dennis Elbert**, of Inglemoor High School, enjoys math, physics, and engineering – perfect for someone planning to study civil engineering at Western Washington University. Dennis received the \$3,000 Sellen Construction ACE Scholarship and the \$2,000 Magnusson Klemencic Associates ACE Scholarship. He also plays guitar, piano, and soccer.
- Headed to Cornell University to study architecture is **Andrew Fu**, a senior at Garfield High School and this year's top architecture student. Andrew is receiving the \$2,500 McClean Iron Works ACE Scholarship and the \$2,000 Miller Hull ACE Scholarship. He plays soccer, enjoys art, and participated in a 6-week summer program at Cornell last year.
- **Ben Huth**, a senior at International Community School, is this year's top engineering student. Ben received the \$5,000 ACEC Washington Paul Masten ACE Scholarship, which will help him earn a dual degree in economics and engineering at Claremont McKenna College. Ben is president of his school's National Honor Society chapter and participated in a robotics camp at DigiPen Institute of Technology in Redmond.
- Bellevue High School senior **Darshan Kasar** is planning to attend University of California Berkeley next year to study mechanical engineering, using the \$2,000 Coffman ACE Scholarship. Darshan is good with tools and likes to build things – and has even built his own hovercraft and "Frankenstein" bike!
- **Serena Lam**, a senior at Inglemoor, will study electrical engineering at University of Washington next year with the help of a \$2,000 ACE Scholarship. Serena enjoys tennis and photography and is in the Harry Potter Club at school.
- Our first ACE student from Tacoma, **Christine Parks** will graduate from the Tacoma School of the Arts this month. She will attend Washington State University to study architecture, and she is receiving a \$2,000 ACE Scholarship today. Christine enjoys baking, autocross racing, playing drums, and reading.
- Bellevue High School's **Dmitrij Petters** is excited to attend Massachusetts Institute of Technology next year, with the \$2,000 Sparling ACE Scholarship and \$2,500 Turner Construction ACE Scholarship, both to help in his electrical engineering studies. He participates on BHS's cross country and track teams, and is fluent in Russian.
- Inglemoor senior **Shelby Upton** is excited to attend University of Washington to study architecture next year. She is receiving the \$2,000 LMN Architects Scholarship. Shelby is the yearbook editor, plays softball, and loves fashion.

ACE Mentor Program of Washington 2008-2009 Year-in-Review



- **Elizabeth Weitz** of Ingraham High School is interested in architecture and is excited to learn more next year at University of Minnesota with a \$2,000 ACE Scholarship. Elizabeth is on the swim team at Roosevelt and is a three-time team MVP – and she will swim next year for the 11th-ranked U Minn.

What students are saying about ACE:

- ACE has been an awesome opportunity because of the people that I have met. Working through the design process as a group, building off of the ideas of one another, we found creative solutions that far surpassed ones that we could have come up with on our own. I have learned so much from the mentors and other students, and I know that I have made lasting friendships. **Andrew Fu, Garfield High School Class of 2009**
- Through this program, my obsession with engineering only grew. I caught a glimpse of mechanical engineers in their "home," what they do, and how they do it, giving me an idea of what my future will hold. **Darshan Kasar, Bellevue High School Class of 2009**
- I have gained skills in project planning, bubble diagramming, conceptual phase drawings, model making, Sketch-Up tools, and working in a group. In addition, I have had the opportunity to grow as a student, a thinker, an individual. **Christine Parks, Tacoma School of the Arts Class of 2009**
- (ACE was) an opportunity to show me what architecture is really about. I used to be very shy, but thanks to my mentors and friends, I have learned to speak up and share my ideas. I started to have more confidence in myself. **Nancy Truong, Roosevelt High School Class of 2009**
- I have always been interested in architecture, but for some reason did not think of it as a career. It was by chance that I came upon this program, and as things would happen, I found a place where I felt I belonged. It is such an inviting atmosphere where one is able to share ideas and learn from mentors how to establish those ideas into something tangible. **Shelby Upton, Inglemoor High School Class of 2009**

ACE Mentor Program of Washington

2008-2009 Year-in-Review



Local firms that contributed to this year's ACE program are as follows:

Donor Support

\$5,000 +

American Council of Engineering
Companies of Washington

\$2,000 - \$4,999

Coffman Engineers
Lease Crutcher Lewis
LMN Architects
Magnusson Klemencic Associates
McClellan Iron Works
Miller-Hull Partnership
Sellen Construction
Skanska USA
Sparling
Tetra Tech
Turner Construction

\$1,000 - \$1,999

Affiliated Engineers, Inc.
Callison
DCI Engineers
Degenkolb
Howard S. Wright Constructors
KPF Consulting Engineers
McKinstry Co. Charitable
Foundation
(and Mark Gardner)
Mithun

\$500 - \$999

Bassetti Architects
Bentall Capital (Newport Corporate
Center)
Coughlin Porter Lundeen
Freiheit & Ho Architects
Holmes Electric
M.A. Mortenson
PCL Construction
Schnitzer West
SRG Partnership
Structural Engineers Association of
Washington
Walters and Wolf
Wood Harbinger
WSP Flack & Kurtz

Mentor Firms

Affiliated Engineers, Inc.
Armour Unsderfer Engineering
Arup
Bassetti Architects
BCJ
Callison
Carla Keel Group
CG Engineering
CT Engineering
DCI Engineers
Degenkolb
Freiheit & Ho Architects
Group MacKenzie
Hill International
Hoshide Williams
JPC Architects
KPF Consulting Engineers
Lease Crutcher Lewis
LMN Architects
Magellan Architects
Magnusson Klemencic Associates
McKinstry
Miller Hull Partnership
Mithun
Mortenson
NBBJ
Notkin Engineering
Olson Sundberg Kundig Allen
PCL Construction
Puget Sound Energy
Ron Wright & Associates
Rushing Company
Sasco
Sellen Construction
Skanska USA
Sparling
SRG Partnership
Transpo Group
Turner Construction
Wood Harbinger
WSP Flack+Kurtz