



ACE in Atlanta

ACE Atlanta 2009-2010 Program Newsletter # 16 - March 1, 2010



We thank **PANOLA** for their generous Food Sponsorship of the ACE Atlanta 2009-2010 Program!



ACE Atlanta Students present their designs!

On Wednesday, February 24, 2010, three ACE student teams came prepared to present their final designs for the 2009-2010 ACE Program Curriculum. ACE Atlanta congratulates Legendary Architecture, U.E.A. (Universal Engineer Associates), and Au-dela for their hard work and preparation that came through loud and clear in their presentations.

There are three more teams scheduled to present on Wednesday, March 3rd. Since they were not prepared to present by the scheduled deadline of Feb 24th, they will be penalized 10 points on their presentations. **Again, as discussed in class, if your team name is on the March 3rd list and decides not to present on March 3rd, do not attend class. If you attend class and decide not to present, you will be asked to leave out of respect to the other students who have worked hard on their presentations.** This decision is up to you.

Students - remember to sign in at each class! The following ACE students participated in their ACE student team final presentations:

- Gabriel A., Lithonia High School
- Branniton B., Lithonia High School
- Stephen D., Lithonia High School
- Eddie D., Stephenson High School
- Martin J., Stephenson High School
- Marquevious M., Stephenson High School
- Austin L., Stephenson High School
- Melvin W., Lithonia High School
- Sherline D., Lithonia High School
- Christopher B., Lithonia High School
- Killian O., Lithonia High School

Thank you to the students listed above for participating in your team's presentation. As you know, participation in the final presentation is a requirement to being a successful ACE student. We hope that you had fun working as a team on your final project.

Students! The second day of **Final Presentations is on Wednesday, March 3rd**. The order is as follows:

1. EBB
2. Vision
3. Dream Team

If your group is on the list above and decides not to present on March 3rd, do not attend class out of respect for the students who have already presented or want to present.

ACE Atlanta Student Final Presentations: Legendary Architecture - New Lithonia Middle School

Congratulations to Legendary Architecture for being the first student group to present. The firm Legendary Architecture was comprised of:

- Gabriel Anderson - Lead Architect,
- Branniton Bell - Project Superintendent
- Stephen Dunham - Project Manager

Gary Tavel, Civil Engineer, was not present to participate in the Final Presentation.

Legendary Architecture chose to renovate Lithonia Middle School, located in DeKalb County. The school was originally built in 1885, of granite and stone. Originally constructed as a high school, it was converted to a middle school after a new high school was built in 2003. The firm states: "The motives of this reconstruction are to bring back the life of the community by first starting with a learning academy. The school is a safe and enjoyable site that we believe will bring a positive attraction to the community, as well as push forth an environmentally friendly atmosphere."

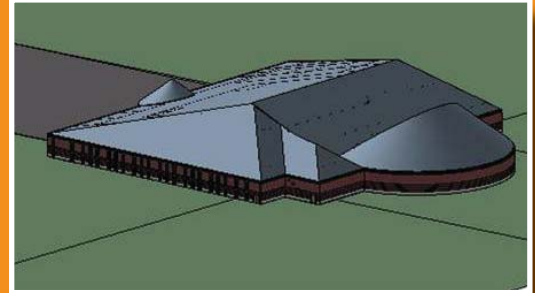
Their presentation started with a series of photographs documenting the current state of Lithonia Middle School.

Highlights from Legendary Architecture's design include:

- Paints and carpet adhesives that don't emit toxic or harmful gases.
- Custodians only use VOC approved cleaning products.
- Recycle tiles for school floors.
- Low-efficiency faucets, urinals and toilets use captured rainwater.
- HVAC systems are cooled by collected rainwater, mist on them to reduce energy use.
- School organizations that promote further beautification of the community.

Legendary Architecture's PowerPoint presentation included multiple photographs of the current interior of Lithonia Middle School, images of the athletic field and its facilities, and one aerial view of the new design. That presentation was supported by a three-ring binder handout and two board displays.

The total estimated project cost of New Lithonia Middle School was \$25,215,430.86.





ACE Atlanta Student Final Presentations: U.E.A. - Discovery High School

Congratulations to Universal Engineers Associates (U.E.A.) for presenting their design for Discovery High School. U.E.A. team members all presented on February 24th:

- Eddie Dozier - Architect and Project Manager
- Martin Jakes: LEED® Consultant
- Marquevious Martin - Civil Engineer and Landscape Architect
- Austin Lumpkin - MEP Engineer

U.E.A. chose their site "because it is a center focal point for the surrounding neighborhoods to have a state-of-the-art learning facility." The opening of their presentation included their mission statement: "Our mission at Discovery High School is to provide individualized education that addresses students' unique learning styles, cultivates independent thought, and promotes the building of character, enabling them to contribute to their communities in meaningful and positive ways."

U.E.A. also selected an eye-catching mascot for the new high school - a white tiger. They stated that "The white tiger stands out amongst any other - it is unique. Here at U.E.A., we want our client to be unique and stand out like their mascot."

Highlights and quotes from U.E.A.'s presentation included:

- Management for low-flow water urinals, fixtures and systems.
- Synthetic turf on athletic fields saves 70% on water bill.
- Incorporation of solar panels and natural daylight to cut down on cost and scientifically increase the behavior and performance of students.
- Rooftop garden - helps reduce the cooling cost because the soil absorbs all the heat.
- Pervious parking lot - used to prevent runoff into any bodies of water and to retain stormwater.
- Deciduous trees - during the summer, they would shade the glass and during the winter, they would allow the sun to reflect through for heat.
- Washable trays/silverware - instead of constantly spending money on plastic trays, we can just rewash our trays, plates, etc.
- Pond - the pond will lead to the greenhouse; the waste from the fish will serve as fertilizer for the plants.
- Structural materials included autoclaved aerated concrete, fiberglass, light structural steel beams.

U.E.A.'s presentation included two full floorplans, North, South, East and West elevations, and renderings of the front facade, the courtyard, and a restroom. The team noted that unique aspects of their design were the student lounge, a greenhouse, and advanced science labs.

U.E.A.'s project estimate for Discovery High School including site was \$65,044,028. The total square footage was 377,789.56-SF.

ACE Atlanta Student Final Presentations: Au-dela - Diversity Middle & High School

Congratulations to ACE student firm, Au-dela Architect, for presenting on February 24th. Their presenting firm members were:

- Melvin Willis
- Sherline Delva
- Killian Okongo
- Christopher Brown

One team member, Sam Brown, was not present to participate in the final presentation. Team members did not play specific roles in the design process.

Au-dela's PowerPoint presentation included the following points:

- Their motto: "Education is not determined by the color of your skin, but how you push your mind."
- Their site was near new neighborhoods, in a location where there are only 3 high schools and 2 middle schools within a 30-mile radius.
- Construction materials included "plastic glass windows, Arizona Rose brick, turf, lake, streetlights".
- Features of the school building included a pool, lobby, "career pathway", and a lunchroom located on the roof.
- The gym had a "locker room, basketball courts, and a track and weight room".
- The theater also holds the creative art class.

Au-dela's PowerPoint presentation did not have any renderings of their project - instead their boards had a Autodesk® Revit® renderings of two aerial views and two elevations, as well as original sketches.

Au-dela didn't total their estimate but chose to have it separated out in their PowerPoint presentation. The numbers were:

- Acres: \$7,500,000
- Parking lot: \$9,000
- Foundations: \$400,000
- Structural frame: \$750,000
- Metal roof system: \$375,000

