



ACE

Mentor Program

SOUTH FLORIDA AFFILIATE EDITION

Career directions for students in architecture, construction and engineering

Letter from the Chairman

With the conclusion of our first year, our affiliate has mentored nearly 100 junior and senior high school students in five schools: bringing awareness to career opportunities in Architecture, Construction, Engineering and Crafts. The ACE Mentor program fits extremely well within Florida's unique Career Academies program, which provides academic and vocational training to high school students. Through these small, high school-based learning communities, we're able to expand the ACE Mentoring Program's visibility and capture the attention of a highly motivated group of young people.

Our goal beyond our first year of mentoring is to improve the mentoring process by adding inspirational activities such as a signature project visit, enlisting more trade contractors as mentors, creating a college night and supporting the graduates of the ACE program with summer internship programs. Another goal was to expand our board of directors to include representatives from ABC, AGC and CASF chapters that represent our industries in Dade, Broward, Palm Beach and Martin Counties. Through this endeavor we have met with the directors and managers of career education in Dade and Palm Beach counties, which resulted in the addition of Carol City High School in Dade County and Atlantic High and Seminole Ridge in Palm Beach County. This will bring the total number of schools under the South Florida region to eight, through which we will introduce our industry to 160 students this fall.

Our affiliate was featured in the September 2009 issue of Southeast Construction, thanks in part to one of our board members who is also the publisher of Southeast Construction and part of McGraw Hill Construction, a national ACE sponsor.

Now that we have the proper infrastructure in place, there is a strong potential to expand ACE of South Florida in our third year (2010-2011) as there are ten additional high schools in our area currently hosting construction Career Academies. To do that we are going to need additional mentoring firms to sponsor the schools, so if you're interested or would like to get more information, please contact me or any of the other ACE representative by visiting the website at www.acementor.org

This past year has truly been a collaborative effort between, students, parents, teachers, school officials, mentors and mentoring firms. Thanks to all who participated in this worthwhile endeavor. I'm proud of what we've accomplished thus far and excited about the difference we will make in the next year.



Charles P Reid
C.E.O., Current Builders
Chairman, South Florida ACE

ACE National News



Pamela Mullender
President
ACE Mentor Program

From the record number of scholarship donations and recipients to our expansion to 34 new cities, this has been a phenomenal year.

I'm particularly pleased with the establishment of the Leadership Council, a diverse group of supporters that represent every facet of the building and construction business. Each one of these participating companies brings a unique and vital element to our program. With their help, we are well on the road to achieving our goal of 100,000 students a

year in the program by 2012. From an operational perspective, we've also made great strides. This last year, the ACE Mentor executive board asked FMI to conduct a comprehensive study of the current ACE organizational model and offer recommendations to improve our structural, staffing, policy and procedural goals. Their perspective has helped solidify the purpose and progress of several of our in-place initiatives in the way of student tracking, mentor networking and fund raising.

We've kicked off our wonderful Web-enabled student database that will help us continue to offer advice and opportunities to our students through college and

onto careers in our exciting industry. This next year, we'll expand to dozens more cities, continue to support existing affiliates and bring on energetic sponsors.

It's a great pleasure to be involved with the ACE Mentor Program. We're fast becoming the number one workforce development program in the country because of the passion and dedication of thousands of individuals, companies and, in fact, an entire industry. The road ahead holds a number of challenges, but we have the people and the passion to reach our goals.

Resource: page 40 of the September 2009 Southeast Construction Magazine



ACE's Newest Mentoring Partners

- > Autodesk
- > Baker Concrete
- > Coastal Construction
- > Emcor
- > Everglades University
- > Hedrick Brothers Construction
- > Thornton Tomasetti
- > Weitz Construction



Scholarships are available!

Visit us on the web at www.acementor.org

Apply at: www.acementor.org

IN THIS ISSUE:

Letter From The President	1
Team Status Reports:	
Atlantic Technical Center	2
Plantation High School	3
McArthur High School	4
South Fork High School	5
Miami Senior High School	6
Year End Award Presentation	7
Regional Board of Directors	8

ACE Mentoring:
Career directions
for students in
Architecture,
Construction and
Engineering

ACE Atlantic Technical Center

Team Leader
Shawn Ladd, James A Cummings

ACE Mentoring School Champion
Anthony Minimi, Atlantic Technical
Center – Constr. Magnet Program
Teacher

Club Membership Attendance
Recruitment – 11
Final Enrollment - 9

Construction Site Field Trip
Pompano Beach Middle School
James A. Cummings, Inc.

**Mentor Team Report:
Atlantic Technical Center**

Atlantic Technical Center has concluded the first year of the ACE Mentor program and is waiting for next year with much excitement and anticipation. The success can be measured not only by the amount of knowledge gained by the students, but by the mentors as well. Fresh challenges lie ahead and the mentor group lead by James A. Cummings, Inc. is carefully planning another year of new challenges.

Our program is a bit different than the other schools in that we meet during school hours. Because Atlantic is a Technical School, some of the students are "share time" with another school and leave in the afternoon. We also had to deal with getting students involved that had clubs, sports, and/or work after school. By meeting in the mornings, we were able to include as many students as possible and keep their attention! We began with eleven students - nine juniors and two seniors. Unfortunately, the seniors were switched to a different program so we ended the year with nine students. We split the group up into two teams in order to tackle the RFP assigned to the Broward County ACE schools.

Since these students were all being exposed to the construction industry for the first time, they had never learned about reading plans, scaling drawings, or taking off materials. Yet, we learned that most of them wanted to go into design or engineering out of high school. One of the many merits of this program is spreading awareness of the construction trades – something that most students know nothing about. By showing them how Construction Management firms operate they are being exposed to qualities that are desired by career-seeking, college-bound students. With the understanding that these students had no

exposure to construction at all, the RFP project was very daunting for them. They did not know what a Request for Proposal was, let alone what it involved. We knew that we had a lot of work to do and not a lot of time to do it. Jorge Gutierrez, the mentor from Cubellis architecture firm, came first to talk about bubble diagrams and how to come up with an idea that works. A week after he came to introduce himself and his profession, we visited with him at his office to show what we had come up with for the design. This way the students were able to get out of the classroom and into a professional atmosphere similar to what they could expect if they pursue a career in architecture. We continued in this same way with the Paula Hollihan, the Civil Engineer, and Marcus Unterweger, the Structural Engineer. Each time the mentors first came to explain what they do, field the students' questions, and then help them with their projects. The following week we visited them at their office and the students benefitted from a broad perspective of what the industry's professionals do and how they bring their skills together. For Cummings' input on the project, we presented scheduling, safety, and management. We also brought the students to one of our jobsites, Pompano Beach Middle School. One of the students went there when she was younger, so she was interested to see the new improvements that were being made. Marty Curtis, our Project Manager, went over the different roles of our field staff and let the students tour the site. Tony Minimi, the School Champion and teacher of their tech program, helped point out real-world applications of what they had been learning in class.

Through dedication and hard work the student projects were complete when the presentation night finally arrived. Each team had been coached by the Cummings marketing and business development department on how to give a presentation and what key points to talk about. Because all of our students were juniors, they were not eligible for scholarships; however, one of the Atlantic Tech teams earned the certificate of best project and presentation for the evening - determined by a panel of judges who represented the project Owners.

The night came together beautifully and was an excellent display of all the hard work that each student from each school put into this program. After speaking with all of the mentors involved, the universal impression among us was how far these students had come and how impressed everyone was with all of their projects. We look forward to another great year for the ACE Mentor program of South Florida.

- Shawn Ladd, James A. Cummings, Inc.



**Mentor Team Report:
Plantation High School**

The ACE Mentor Program at Plantation High School has concluded its first year with great success. The program started with twenty-two students from all grade levels who were enrolled in the Plantation High School Construction Technology program. Although the program suffered some attrition due to other activities and responsibilities, about fifteen consistently attended all sessions. The results were three team projects presented by six representatives of those fifteen students during the ACE Presentation Night event.

The mentors were enthusiastic about participating in the program and we had a company to represent each of the major industry specialties – RLC Architects (Architecture), McCarthy & Associates (Structural Engineers), IBI Group (Civil Engineers), AA Advanced Air (HVAC Subcontractor), Ridgeway Plumbing (Plumbing Subcontractor) and Pomeroy Electric (Electrical Subcontractor) and of course, Current Builders (General Contractor). Additionally, Kurt Langford of Suffolk Construction participated in most of the sessions and acted as a backup team leader. In total we had 16 individuals participating as mentors for the students.

The students were introduced to the various specialties through presentations and activities presented by the various company mentors. The students were also exposed to some of the industry hot topics: Building Information Modeling (BIM) and green building. Additionally, there were four field trips during the program: a site visit to a large Current Builders construction site in downtown Ft. Lauderdale, RLC Ar-

chitects' office in Boca Raton, the ABC Apprenticeship Training Facilities and Current Builders' office in Coconut Creek. The students seemed to enjoy and appreciate the experience of each location.

The final presentations were presented by the students on May 7th, 2009 at the Plantation High School Auditorium. Each team introduced their affordable housing project for the Broward County School Board and was judged by a panel of school representatives. The presentations consisted of a PowerPoint with site plan, floor plans, elevations and 3D views. Though the RFP called for project schedules and estimates, time constraints and slow progress during the design stage forced us to make these optional. The students showed great courage in getting up on the stage and presenting their ideas to not only their families, but also industry professionals as well as ACE and school representatives.

All graduating seniors were given the opportunity to apply for both the National ACE Scholarship and the local affiliate scholarships. We awarded two local affiliate scholarships to our students and Pamela Mullender, of ACE National, presented the National Scholarship to one of our students.

It has been a rewarding and challenging first year. And as Team Leaders, we are looking forward to the new challenges of our second year. Go Colonels!

- Staci & David Thirlwell, Current Builders



Students present site plan to Bob Selinski, McCarthy & Associates

ACE Plantation High School

Team Leader

Staci Thirlwell, Current Builders
David Thirlwell, Current Builders

ACE Mentoring School Champion

George Snyder, Plantation High School – Building Technologies Teacher

Club Membership Attendance

Recruitment - 22
Final Enrollment - 15

**ACE College
Scholarship Award
Winners**

Tai Van

\$2,500 Scholarship

Sponsor -
McGraw Hill Construction

James Estimable

\$1,000 Scholarship

Sponsor - AGC's Young
Constructor's Forum (YFC)

Chris Keller

\$500 Scholarship

Sponsor - AGC's Young
Constructor's Forum (YFC)



Congratulations Tai Van!

Tai is one of just five ACE students to be awarded a scholarship to attend the GreenBuild conference in Phoenix, Arizona this November. The five scholarship recipients will be ambassadors of the ACE Mentor Program furthering the program by exhibiting the effectiveness of the program.



ACE Mentoring:

The program's mission is to enlighten and increase the awareness of high school students to career opportunities in architecture, construction and engineering and related areas of the design and construction industry through mentoring; and to provide scholarship opportunities for students in an inclusive manner reflective of the diverse school population.

<http://www.acementor.org>

Mentor Team Report: McArthur High School

ACE McArthur High School program has concluded its first year with much success. The program started with 21 students – all seniors. Of those students 8 to 10 consistently attended the sessions. Unfortunately, the economy had a major impact on the program as a majority of the students had to acquire after-school jobs. Being seniors, after-school sports activities and social commitments also had an impact but the students who did attend had a major impact on the presentation.

The mentors showed tremendous commitment to the students and the program. Our architect, Edgar Salvador of Pavlik Design Team, and Civil Engineer Al Tello of Schwebke-Shiskin and Associates, were dedicated to working with the students in developing a unique community as their project. They allowed the students to think outside the box and encouraged their imagination while giving them real life scenarios.

The students mentioned sustainability as one of the major themes. They talked about the importance of recycling and green concepts. Mr. Salvador listened to the students and presented them with a concept of designing residential units out of shipping containers. The students initially rejected the idea but as they researched the idea they learned the feasibility of the "green" project and collectively decided to move forward with the idea.

The students researched local communities and put themselves in the role of a developer, investigating what features were important. Mr. Tello's ability to relate to the kids how the site corresponds to the building was critical to the project's development. As a result of their research, and with the guidance of the mentors, they built a

scale model of their community. Their excitement was evident, seeing the project develop from conception to the PowerPoint presentation.

The program would not have been a success without the dedication and talents of the mentors, nor without the enthusiasm and leadership of McArthur's school champion, Tony Petosa. Without their combined efforts to instill interest in the group, the program would not have existed.

The final presentation was presented by the students on May 7th, 2009 at the Plantation High School Auditorium. The team introduced their green, affordable housing project for the Broward County School Board and was judged by a panel of school representatives.

We are looking forward to the new challenges of our second year with a new group of students.

- Josh Feldman, Roepnack Corporation



McArthur High students in the ACE program listen intently as Al Tello of Schwebke-Shiskin and Edgar Salvador of Pavlik Design Team discuss the relationship of the site plan and the building.

ACE McArthur High School

ACE Mentoring Team Leader

Andy Long, Roepnack Corp.
Josh Feldman, Roepnack Corp.

ACE Mentoring School Champion

Tony Petosa – McArthur High School

Mentor Team

Pavlik Design Team

Edgar Salvador

Schwebke-Shiskin & Associates

Al Tello

Club Membership Attendance

Recruitment - 21
Final Enrollment -10

Juniors:

William Bernardi
Angel Gerena
Naggie Goulding
Richard Moran
Sean Shendan

Seniors:

James Baldelli	Shawn Smothers
Kenny Copeland	Nicolas Stoner
Jerry Etienne	Johnny Thompson
Dylan Fugett	Eli Valencia
Estevan Gaudry	
Edgard Moise	
Carl Nielly	
Richard Oliver	
Nicholas Palmacci	
Patnck Paul	



**Mentor Team Report:
South Fork High School**

The ACE Club at South Fork High School concluded the "pilot year" events with a Project Design Competition on May 19, 2009 creating project plans for a new South Fork HS Cafeteria including --- Front Elevation, Floor Plan, Site Plan, Estimate, and Construction Schedule. Three teams competed and the special panel of judges was overwhelmed with the level of detail when the ACE students' power point presentations were debuted. Serving as Judges were School Board Member Sue Hershey, School Principal – Pat Schmoyer, School Architect – Greg Kelly, School General Contractor VP – Dago Diaz, and School Construction Manager – Garrett Grabowski. The highly successful competition was due to the ACE program curricula which followed a step by step system leading up to project presentation for the job.

Twenty-two students were recruited from the South Fork HS drafting, architecture, and carpentry classes. Instructors screened students to meet minimum criteria of satisfactory GPA, attendance and completion of basic general education requirement toward graduation. Club members met every other Tuesday from 9am – 11am to hear industry mentor professionals' presentations starting with school representatives sharing the Design Project RFP and Owner Requirements. Each presentation thereafter followed the design sequence to construction phases from start-up through final presentation to be awarded the job. Students learned from speakers about career opportunities, design and drafting techniques, structural engineering basics, and specifics about colleges and universities. By touring construction projects like Torrey Pines Institute for Molecular Studies, students learned about Sustainable Construction and Building Information Modeling (BIM) applied to this project. The second field trip to the new Suffolk Construction Office demonstrated LEED Silver building components incorporated to the project. Students and school instructors also learned about estimating and scheduling for the cafeteria design project in Suffolk's Training Center. Visiting the cafeteria under construction at the

Suncoast High School demonstrated how the electrical and mechanical components tied into the finishes of the new project. Students compared different types of construction from the 3 field trips to commercial sites.

Classroom "hands-on" demonstrations were presented by Judy Perkins of CSM Structural Engineers, by building scale beams out of foam core. Roy Wright of Arlington Electric also presented bending electrical conduit and then toured school cafeteria electrical panel rooms stressing safety on the job.

Peter Supple, Suffolk Project Executive, presented the last session on "Giving the Project Presentation". Students learned the finer points on proper dress, public speaking, and system to deliver project details. Two practice coaching sessions were held for their final presentations. Mentors Sean Ouellette – Suffolk, Brent Martin – Pirtle, Robin Pelensky and Jarrod Purser – Houston Cuzzo coached teams.

Seven students applied for ACE scholarships. One was awarded a McGraw Hill National Scholarship and three were awarded local funds. Local scholarship funds were donated through committee member companies. Donations were as follows: McGraw Hill \$2500, Suffolk \$1000, Arlington Electric \$500, CRA \$500, and CSM Engineers \$500.

In conclusion, at the Project Design Competition Award Presentation, school officials and students were asked to comment on the new program. Everyone congratulated the ACE mentor volunteers for a job very well done and looked forward to another successful program next year. The students thanked mentors for all that they had learned and the only suggestion was more field-trips next year!

- Fred Day, Suffolk Construction

ACE South Fork High School

Team Leader

Fred Day, Suffolk Construction Co.
Sean Ouellette, Suffolk Construction Co.
Peter Supple, Suffolk Construction Co.

ACE Mentoring School Champion

Barbara Anderson,
South Fork HS - Drafting Teacher

Club Membership Attendance

Recruitment - 24
Final Enrollment - 18

**Project Design Contest Winners
South Fork HS "New Cafeteria" Project**

FIRST PLACE

Gage Satmary – Team Captain
Joe Simon, Dan Boring, Mark Kutz, Dennis Kelly

SECOND PLACE

Steven Aldridge – Team Captain
Chase Starr, Kevin Lindgren

THIRD PLACE

Nick Morgan – Team Captain
George Norelli, Tyson Young,
Wesley Colean, Allison Brisky

**ACE College
Scholarship
Award
Winners**

Steven Aldridge
\$2,500 Scholarship

Sponsor
McGraw Hill Construction

Chase Starr

\$1,000 Scholarship

Sponsor - Suffolk
Construction Company

Nick Morgan

\$500 Scholarship

Sponsor - Clemons,
Rutherford Architects

Gage Satmary

\$500 Scholarship

Sponsor - Arlington
Electric Company



**ACE Mentor
Speakers:**

**Turner Construction
Company**

Daniel Fahmi
Carlos Farro
Leon Bell
Sandra Alvarez
Eric Hudson
Reuben Ray

Kimley-Horn
Jack Perry

**Florida International
University**
Stephanie Strange

**Mentor Team Report:
Miami Senior High School**

The ACE Mentor Program of 2008-09 continued at Miami Senior High School this year to celebrate its 5th year in Miami. The program began strong with 15 participants. As with prior years the program's goal is career development, jobsite tours, office visits, and a final group project. One highlight of this year's program was the jobsite tour of the Miami Intermodal Center in December 2008. The students participated on a guided tour of the facility, met the project team, and were shown how drawings are read.

the project was not completed to their satisfaction and they opted out of the competition. I supported their decision, but made it their goal to make the necessary changes by the end of the program, which they have done successfully.

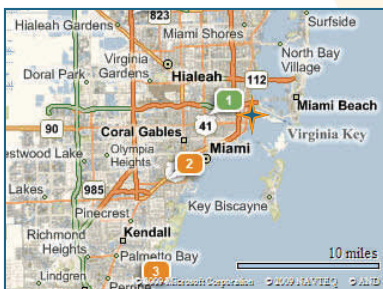
While the year began strong with 15 participants we lost students after the New Year. Despite the drop in students, there was a solid group who participated weekly.

We are very excited to report that three students who returned from last year are graduating seniors who will be attending MIT, Penn State, and FIU in engineering fields. One of these students is currently being considered by ACE National for a \$5,000 scholarship! We are continually committed to the ACE Mentor Program, however, may be exploring options of another school for the 2009-10 school year.

Continuing after the New Year, the students began to work on their project. The group assignment was to design the Olympic Stadium for the 2012 Olympics in London. Each student was assigned a portion of the project and in spite of their best efforts,

Kimley-Horn and Perkins-Will would like to partner with us for next year.

- James Fraser, Turner Construction



Miami High School
2450 SW 1st Street,
Miami, FL 33135
(305) 649-9800

ACE Miami Sr. High School

ACE Mentoring Team Leader
James Fraser, Turner Construction

ACE Mentoring School Champion
Eric Hueck, Science Teacher
Miami Senior High School

Club Membership Attendance
Student Recruitment - 15
Final Enrollment - 15

Construction Site Field Trip
Miami Intermodal Center -
Turner Construction Company



Broward County ACE Schools Host Year-End Event

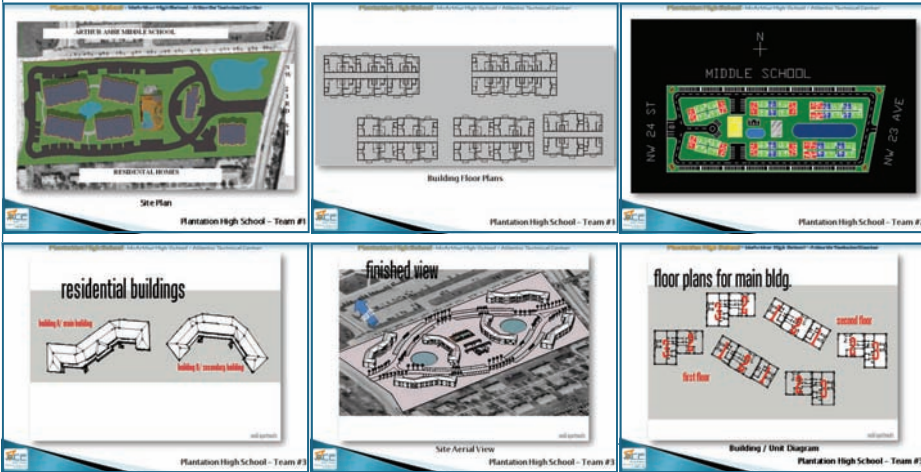
An evening *Presentation & Award Event* marked the close of the inaugural, 2008-2009, school year for Broward county schools that participated in ACE Mentor Program. The event took place on May 7th, 2009 and featured student teams from all three schools.



The presentations consisted of each team's response to the full-term project: to design an affordable housing development specifically aimed at the county's public teachers. All teams were given a site and specific, real-world criteria for the project and the presentations were judged by a distinguished panel of industry and Broward county school representatives.

The slides below represent at least one slide from each of the projects presented at the event with the winning project in the sidebar to the right:

PLANTATION HIGH SCHOOL



MCARTHUR HIGH SCHOOL



MCARTHUR HIGH SCHOOL

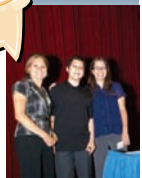


The event was also proud to host the ACE Mentor Program's National President, Pamela Mullender. Both Pamela Mullender and Chip Reid spoke to the students, parents, mentors, and visitors about their visions for ACE and the opportunities available to young people pursuing careers in the building industries.

We were also very pleased to announce that one of our own students, Tai Van of Plantation HS, was chosen by the National ACE Mentor Program to receive a \$2,500 McGraw-Hill scholarship for continuing education! Thank you, everyone who made ACE South FL's inaugural year so successful!

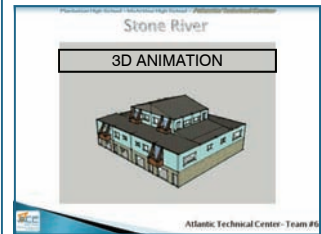
Congratulations!

TEAM 6
Atlantic Technical Center
WINNERS of the
BROWARD COUNTY
ACE MENTORING
DESIGN COMPETITION



Rachel Flexman
 Brandon Conley
 Leticia Gonzalez

Sean McAllister
 Chelsey Miner



PROJECT SUBMISSION — BROWARD COUNTY SCHOOLS

ACE Mentor Program Affiliate of South Florida

BOARD OF DIRECTORS

Charles P. Reid, Current Builders - Chairman

Jay Fraser, Turner Construction Company - Vice Chairman

Gary Pirtle, Pirtle Construction - Secretary

Dago Diaz, Suffolk Construction - Treasurer

Lenny Ortiz, Smith Currie - Legal Council

David Huppert, Joseph H. Huppert, - C. P. A

REGIONAL BOARD OF DIRECTORS

DADE
COUNTY

Candice Harris
Turner Construction
Company

Jack Perry
Kimley Horn & Assoc.

**Maria Fernandez-
Porrata**
Marlin Engineering

Daniel Fahmi
Turner Construction
Company

Greg Mahunik
Turner Construction
Company

MARTIN
COUNTY

Brian Polhemus
John Polhemus Fire
Sprinklers

Roy Wright
Arlington Electric

Julian Angel
Martin County Schools

BROWARD
COUNTY

Len Mills
South Florida AGC

Ray de la Feuilliez
James A. Cummings

Richard Carr
Current Builders

Robert Roepnack
Robert Roepnack
Construction

Bob Usefot
Broward County
Schools

Ruth Tirado
Associated Builders
Contractors Institute

John Siegle
Construction Assoc. of
South Florida

PALM BEACH
COUNTY

Jim Politis
Palm Beach County
Schools

Michelle Anaya
AGC - Florida East
Coast

Kurt Langford
Suffolk Construction

MEMBER AT
LARGE

Dan Downey
McGraw-Hill
Construction

ACE Mentoring:

Will there be enough architects, construction managers and engineers to fill the industry's needs ten years from now? The ACE Mentor Program of America, Inc. is working hard to make sure there are. ACE is an acronym for architecture, construction, and engineering.

ACE is a unique partnership among industry professionals architects, interior designers, engineers, construction managers, college and university representatives, and other professionals from related corporations and professional organizations — who work together to attract young people to their professions. Industry professionals volunteer to become mentors to high school students in order to introduce them to the professions and encourage them to pursue studies and careers in these fields. In return, the industry get a much-needed boost of new talent.

<http://www.acementor.org>



ACE Newsletter Info

This newsletter is produced by the ACE Mentoring Program Affiliate of South Florida.

Newsletter Contact:

David Thirlwell, Current Builders
(954) 977-4211
dthirlwell@currentbuilders.com



Approved and Certified
Department of Labor and Florida Dept. of Education
Apprenticeship Program Provider



College (Credits) Available through Articulation Agreements

Electrical ▪ Fire Sprinkler ▪ Air Conditioning & Refrigeration ▪ Plumbing ▪ Power Distribution

4 - Training Centers Located: Miami ▪ North/South Broward ▪ Palm Beach Counties

Associated Builders and Contractors Institute

Phone: 954-984-0075 ▪ URL: www.weTrain.org ▪ E-mail: info@weTrain.org

Equal Opportunity Training Provider