



SOUTH FLORIDA AFFILIATE - BROWARD COUNTY EDITION
 Career directions for students in architecture, construction and engineering

Letter from the Chairman

First, a little history on ACE Mentoring and Career Academies: I have had the opportunity to serve on a national workforce development committee whose recent focus has been the creation of small learning communities within high schools, known as Career Academies. While for the most part they have been successful throughout the country, there have also been Academies which have not shared the same success. The reason I believe is that for a Career Academy to truly succeed, active industry representatives must make an earnest effort to participate in the process.

When I was introduced to the ACE Mentor Program and asked to chair our four-county affiliate I felt this was the perfect opportunity to introduce ACE to schools that either had an interest in creation of a Academy or had an existing program. In our first discussions with Broward School officials, their enthusiasm was tremendous and the discussion started to focus on one, potentially-accredited Academy and shortly turned into three accredited Academies.

Our first mentoring program is well underway with 30 mentors and 54 students between Atlantic Technical Center in Pompano Beach, McArthur High School in Hollywood and Plantation High School. All three High Schools are working on similar projects and will present their projects as teams to an audience on May

7th at the Plantation High School auditorium. The students are also in the process of applying for scholarships from both the National ACE affiliate and the local affiliate. The results of those applications will be announced the evening of May 7th.

Our regional board is already making plans for expanding the program for 2009-10 by adding at least one program in each of the four counties. This will take a great amount of effort, but I feel that with the successes we are seeing now, it will propel other students, schools, mentors and the industry as a whole to invest in the program.

This has been a truly collaborative effort between, students, parents, teachers, school officials, mentors and mentoring firms and I think everyone should be proud of what they are accomplishing. I want to thank each of you for all your effort in this very worthwhile endeavor.



Charles P Reid
 C.E.O., Current Builders
 Chairman, South Florida ACE

ACE Scholarship Information

The ACE Mentor Program's National Organization is offering scholarships and based on our enrollment of students in the program this year, we can select three of the student applications to be forwarded to National for scholarship consideration. There is no guarantee that any of the three students will receive a scholarship, but if one does, we will present the scholarship at the May 7th Presentation event.

Students have been informed by their mentors about applying for the ACE National scholarships. The application can be filled out online (www.acementor.org/779) and must be submitted by March 30th. This scholarship application is for the National Scholarship, but it will also be used as part of awarding local scholarships to be given out by ACE Mentor Program of South Florida. The number and amount

of the local scholarships is dependent upon ongoing fundraising at the local level. Industry organizations, sponsors, and participating ACE mentor firms are being encouraged to contribute to the future scholarship of the graduating senior-level ACE students for future College & University pursuit as well as through recognized Trade Education Programs.



Important Dates:

- > All ACE Scholarship Applications are due March 30th
- > Presentation and Award Event is on May 7th from 7:30-9:00 pm at the Plantation HS Auditorium

Scholarships are available!

There's a job for you in the Production, Construction, or Engineering Industry!

ACE
 Career Directions
 Architecture, Construction, and Engineering

Apply at: www.acementor.org

IN THIS ISSUE:

Scholarship Information	1
Team Status Reports:	
• Atlantic Technical Center	2
• Plantation High School	3
• McArthur High School	4
Presentation & Award Event	4
Regional Board of Directors	5

ACE Mentoring:

Career directions for students in architecture, construction and engineering



Archive Student Work

Students :

Make our South Florida ACE program stand-out by providing photos and/or digital files of your ACE-related work. Give CDs or DVDs of your work to your mentors so that we may use images for future newsletters and the national website: www.acementor.org

**Mentor Team Report:
Atlantic Technical Center**

Since the inception of the ACE program at Atlantic Technical Center we have had huge success. The students have been exposed to the everyday responsibilities of Architects, Contractors, and Engineers. We have had nothing but the best cooperation from our associated partners. Jorge Gutierrez with Cubellis has met with the students on numerous occasions to discuss design; as well as letting them tour his office in Fort Lauderdale. Marcus Unterweger with TRC Worldwide Engineering has discussed with the students all of the critical structural design issues and has made examples for them that are relevant and easy to understand. Paula Hollihan with Craven Thompson has presented Civil Engineering issues as well as introduced elements of Landscape Architecture and Surveying. As Contractors, we have brought the students to Pompano Beach Middle School, a jobsite we are currently working on. They were able to tour the job with Marty Curtis our Project Manager and see the numerous goings on of a school project.

The RFP is currently being worked on and as of writing this report, the students are nearing completion of their final floor plans and building site layout. On Tuesday we will begin our discussions of scheduling with a lecture in estimating planned for later in the month. Tony Minimi, our school champion, has been very cooperative to let the students work on their projects during class and has been helping them to bring together his experiences from the real world as a small contractor business owner.

The students are very responsive and seem genuinely interested in any opportunities they have in dealing with industry professionals. With the resources we have at our fingertips, I am confident that this program will be a success and very viable for future programs.

Team Leader
Shawn M. Ladd
Estimator, James A Cummings
James A. Cummings, Inc.

“...we have had huge success. The students have been exposed to the everyday responsibilities of Architects, Contractors, and Engineers.”



Above: Ray de la Feuilliez, Vice President of Business Development for James A. Cummings, Inc., leads the kick-off meeting for the ACE Program at Atlantic Technical Center



Above: Introductory discussions take place on the Construction Industry and their trades. From left to right: Geoff Bunnell, Senior Vice President of Operations for James A. Cummings, Inc.; Giovanna Alessi, Director of Marketing for James A. Cummings, Inc.; Shawn Ladd, Estimator for James A. Cummings, Inc.; Patrick Holland, Document Control for James A. Cummings, Inc.

Mentor Team Report: Plantation High School

ACE Plantation High has recruited 22 students from the Construction Technology program. The students are from all grade levels – one freshman, four sophomores, ten juniors and seven seniors. Of those students, about 15 consistently attend all sessions. There are sixteen mentors on the team.

So far, the students and mentors have participated in nine sessions. Bruce Retsch, Luis Lanao, Juan Caycedo, Daryl Haughn and Manuel Ayala of RLC Architects have introduced the students to Architecture focusing on meeting owner project objectives such as site planning and design constraints (Image 1). The students also took a field trip to RLC's office which was designed by the firm. RLC Architects brought Thomas Donahue with Rhon Ernest-Jones/IBI Group on board to introduce the students to Civil Engineering, touching upon requirements for drainage, sewer, water and roads.

We had Bob Selinski of McCarthy & Associates demonstrate the importance of structural engineering through the Spaghetti and Gumdrop Activity out of the ACE Best Practices Manual. The students had a blast testing their "structures" for strength using textbooks (Images 2 & 3).

Current Builders invited the students to their project, 440 Flagler Village, in downtown Ft. Lauderdale, a residential project consisting of two seven story building and two five story buildings surrounding a five level PT cast-in-place garage. The students were given an overview of the construction management process and then toured the garage and buildings (Image 4). Wesley Smith, one of Current's LEED Accredited Professionals, gave a presentation on Green building and the LEED rating system at Plantation High. The students will be visiting the Current Builders corporate office next session where they will learn about scheduling and the role of a commercial General Contractor.



For MEP, Doug Cady and Brian Pekrol of AA Advanced Air, Inc, Frank Duranza of Pomeroy Electric, Inc. and Jim Howard of Ridgeway Plumbing presented their trades, which included a trip to the school's chiller room with Brian Pekrol.

In an effort to introduce the students to job opportunities in the construction trades, Ruth Tirado with the Associated Builders & Contractors Institute allowed the students to visit the ABC Apprenticeship training facility in Coconut Creek. They were briefly introduced to the many classes, certification programs, and opportunities enabled by the Institute's Mechanical, Electrical, and Plumbing programs (Image 5).

The students are working on a project to provide affordable housing for the Broward County School Board. So far, the students have developed their site plans and have placed the RFP requirements on the site. Overall, the students have been quite impressive and eager to learn and all the mentors are having a great time sharing their knowledge and seeing what the students produce work of their own.

The Seniors participating in the program were provided scholarship applications for ACE National as well as ACE Mentor of South Florida. We are looking forward to the presentations in May and presenting scholarships to those Seniors that have shown exemplary participation in this year's program.

Team Leaders
Staci Bartlett & David Thirlwell,
Current Builders



We want your pictures!

Please bring them on CD or DVD to the Presentation & Award Event on May 7th or mail them to:
Attn: David Thirlwell
Current Builders
2251 Blount Rd.
Pompano Beach, FL 33069



ACE Mentoring:

The program's mission is to enlighten and increase the awareness of high school students to career opportunities in architecture, construction and engineering and related areas of the design and construction industry through mentoring; and to provide scholarship opportunities for students in an inclusive manner reflective of the diverse school population.

<http://www.acementor.org/495>

**Mentor Team Report:
McArthur High School**

The Roepnack Team is happy to help develop the professionals who will lead tomorrow's building industry, by sharing their enthusiasm for construction with the workforce of the future. Andy Long is leading the team, working with Broward County Schools, partnered with McArthur High School in Hollywood. Andy Long and Josh Feldman are leading the students in a building project, giving them a practical, hands-on view of how abstract concepts get transformed into buildings that make up our everyday reality. Also contributing throughout the year as part of the Roepnack team are Roepnack's Ken Roberts and Bryan Englert.

ACE McArthur High School has recruited 20 students, all juniors and seniors. Of those students, five consistently attend sessions. There are 10 mentors on the team. Typically, there are three mentors at each session, depending on the topic.

So far, the students and mentors have participated in four sessions and have been instructed in plan reading, use of scales and introduced to architecture. There are eight more sessions left before the final presentation. These sessions will cover Civil Engineering, Structural Engineering, Construction Management, Mechanical Engineering and Electrical Engineering. There are also three field trips planned: a site visit to an active construction site, Pavlik Design

Team's Architect's office and the ABC Apprenticeship Training Facilities.

The students are working on a project to provide affordable housing for the Broward County School Board. So far, the Roepnack team has worked with the students at laying out basic site plan design and presented them with an existing residential project plans. The group was given 24 x 36 plans, and supplied with scales, to come up with an exterior and interior building design for the 80 apartment units and community center.

The biggest challenge we are experiencing is getting the kids to commit to a schedule. The group of students is very active in sports and the community and most have part-time jobs after school. Therefore it has been slow taking off -getting everyone's schedules committed.

The Roepnack team will re-kick off a condensed eight-week program in March; we intend to see how receptive the students are, and plan to re-group with another set of students next year.

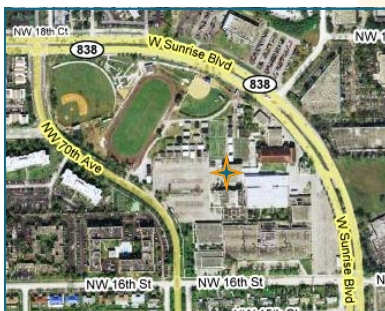
Team Leader
Anthony Long
Project Manager, Roepnack Corporation

Presentation & Award Event Information

Broward County schools participating in the ACE Mentor Program will host the Presentation and Award Event on May 7th, 2009 from 7:30-9:00 pm at the Plantation High School Auditorium. Parents, mentors, and guests (to be confirmed) are strongly encouraged to come and experience the student presentations of their team projects and the scholarship award ceremony as well as some reflection on the inaugural year of the ACE Mentor Program's South Florida Affiliate and recognition of the amazing contributors to the program success.

RSVP Forms will be made available shortly on our Affiliate web page at: www.acementor.org/602

EVENT PROGRAM	Allotted Time	Approx. Start Time
Greetings & Refreshments	10 min	7:30 pm
Brief Remarks about the ACE Program	3 min	7:43 pm
PowerPoint Slideshow and/or Video	3-5 min	7:48 pm
Mentor Remarks about the Program	3-5 min	7:53 pm
Introduction to Student Project (RFP)	3 min	7:56 pm
1 st Student Team Presentation	5-7 min	8:03 pm
2 nd Student Team Presentation	5-7 min	8:10 pm
3 rd Student Team Presentation	5-7 min	8:17 pm
4 th Student Team Presentation	5-7 min	8:24 pm
5 th Student Team Presentation	5-7 min	8:31 pm
6 th Student Team Presentation	5-7 min	8:38 pm
Scholarship Awards	10 min	8:45 pm
Sponsor & Support Acknowledgments	5 min	8:52 pm
Closing Remarks	5-7 min	8:57 pm



Plantation High School Auditorium
6901 NW 16th St.
Plantation, FL

ACE Mentor Program Affiliate of South Florida

BOARD OF DIRECTORS

Charles P. Reid - Chairman
Current Builders

Jay Fraser - Vice Chairman
Turner Construction Company

Gary Pirtle - Secretary
Pirtle Construction

Dago Diaz - Treasurer
Suffolk Construction

Lenny Ortiz – Legal Council
Smith Currie

REGIONAL BOARD OF DIRECTORS

DADE COUNTY

Candice Harris
Turner Construction Company

Jack Perry
Kimley Horn

Maria Fernandez-Porrata
Marlin Engineering

Eric Hueck
Dade County Schools

Daniel Fahmi
Turner Construction Company

Greg Mahunik
Turner Construction Company

MARTIN COUNTY

Fred Day
Suffolk Construction

Sue Hershey
Martin County School Board Member

Julie Sessa
Martin County Schools

Patricia Schmoyer
Principal – South Fork High School

Brian Polhemus
John Polhemus Fire Sprinklers

Roy Write
Arlington Electric

BROWARD COUNTY

Len Mills
South Florida AGC

Lenny Ortiz
Smith Currie

Ray de la Feuilliez
James A. Cummings

Richard Carr
Current Builders

Bob Usefof
Broward County Schools

Ruth Tirado
Associated Builders Contractors Institute

Robert Roepnack
Roepnack Corporation

PALM BEACH COUNTY

Gary Pirtle
Pirtle Construction

Jim Politis
Palm Beach County Schools

Kurt Langford
Suffolk Construction

ACE Mentoring:

Will there be enough architects, construction managers and engineers to fill the industry's needs ten years from now? The ACE Mentor Program of America, Inc. is working hard to make sure there are. ACE is an acronym for architecture, construction, and engineering.

ACE is a unique partnership among industry professionals — architects, interior designers, engineers, construction managers, college and university representatives, and other professionals from related corporations and professional organizations — who work together to attract young people to their professions. Industry professionals volunteer to become mentors to high school students in order to introduce them to the professions and encourage them to pursue studies and careers in these fields. In return, the industry get a much-needed boost of new talent.

<http://www.acementor.org/495>



ACE Newsletter Info

This newsletter is produced by the ACE Mentoring Program Affiliate of South Florida. This issue temporarily covers the Broward County School District only. In the future it will be expanded to include programs in all South Florida counties.

Newsletter Contact:

Bob Usefof c/o Diana Hopkins
(754) 321-8383
diana.hopkins@browardschools.com

or

David Thirlwell
(954) 977-4211
dthirlwell@currentbuilders.com