



ACE MENTOR PROGRAM

Career Directions for Students

ACE of Greater Boston® is a program run by professionals in the design and construction fields working together to inspire high school students to pursue careers in the industry. ACE of Greater Boston is your local chapter within the ACE Mentor Program of America. Students just like you are participating all over the country!

➔ Sign Up online at <http://www.acementor.org/students/new-student-registration/>



Students (seated) holding a "coordination meeting" during a work session at the BSA site. Mentors (standing) watch and guide.

OUR MISSION IS TO
 ENGAGE, EXCITE, AND ENLIGHTEN
 HIGH SCHOOL STUDENTS TO PURSUE CAREERS IN
ARCHITECTURE, CONSTRUCTION, & ENGINEERING
 THROUGH MENTORING, AND TO SUPPORT THEIR CONTINUED
 ADVANCEMENT IN THE INDUSTRY.

ACE is a FREE after-school program providing Boston area high school students with an introduction to **Architecture, Construction and Engineering, including:**

- | | | |
|------------------------|-------------------------|--|
| Architecture | Civil Engineering | The Trades/Skilled Labor |
| Interior Design | Structural Engineering | Mechanical/Electrical/Plumbing Engineering |
| Landscape Architecture | Construction Management | |

Meet with mentors + fellow students once a week after school, October through March. There are four meeting locations to choose from.

Fill out the registration form online here: <https://app.acementor.org/registration/student> to select your preference:

- | | |
|---|--|
| Tuesdays at Wentworth Institute of Technology, | Wednesdays at Boston Society of Architects, |
| Thursdays at Benjamin Franklin Institute of Technology | Wednesdays at SMMA |

Design a space or building in your community. In the past four years, ACE students have designed:

- | | |
|-----------------------------------|---------------------------------------|
| Recreation Center on the Greenway | Adaptive Reuse and Affordable Housing |
| Emergency Shelters in the Seaport | Transit Hub at Commuter Rail Station |

Scholarships are Available

Last year we gave away \$115,000 to graduating seniors. You could be one of them!

SAVE THE DATE
Student Kick-Off
Wednesday, October 17th
 Wentworth Institute of Technology
 Wentworth Hall, Watson Auditorium
 550 Huntington Ave
 6pm-8pm



Scholarship recipients at the 2017 final presentation held at the Wentworth Institute of Technology. The big checks here represent \$125,000 worth of scholarships!

Life of an ACE Student



Visit Construction Sites around the City



Be mentored by skilled laborers and mentors who are professionals in the industry



Build a 3D Model of a Building



Be Supported by the Mayor



Learn how to frame a wall at Trade Day



Train to use the same computer software professionals use



Learn skills and enjoy fun activities like building gumdrop structures

More Information

Questions? Contact us:

Email our Outreach Coordinator:

Alison Stanton AStanton@tcco.com

Email our Student Coordinator:

Ezgi Kosereisoglu EKosereisoglu@GilbaneCo.com

Find us Online:

Complete a registration form online at the ACE National [Website](http://www.acementor.org)


<http://www.acementor.org/students/new-student-registration/>

Check out ACE of Greater Boston [Website](http://www.acementor.org)

<http://acementor.org/index.php/affiliates/massachusetts/massachusetts/about-us/>

Follow us on Social Media:

 Twitter [@ACEMentorBoston](https://twitter.com/ACEMentorBoston)

 LinkedIn [ACE Mentor of Greater Boston Group](https://www.linkedin.com/groups/11111111)

 Facebook [ACE Mentor Page](https://www.facebook.com/ACEMentor)



Win scholarships to use after you graduate.



Develop relationships with professionals who can help you on your path to your dream career

ACE MENTOR PROGRAM

Career Directions for Students in
Architecture, Construction and Engineering

WENTWORTH INSTITUTE OF TECHNOLOGY (WIT) TEAM Location Details

NOTE: WE HIGHLY RECOMMEND ALL STUDENTS ATTEND THE KICK-OFF EVENT ON WEDNESDAY OCTOBER 17TH, 6PM-8PM, WENTWORTH INSTITUTE OF TECHNOLOGY, IN THE WATSON AUDITORIUM. PARENTS & TEACHERS WELCOME.

THEN, REGULAR TEAM SESSIONS BEGIN!

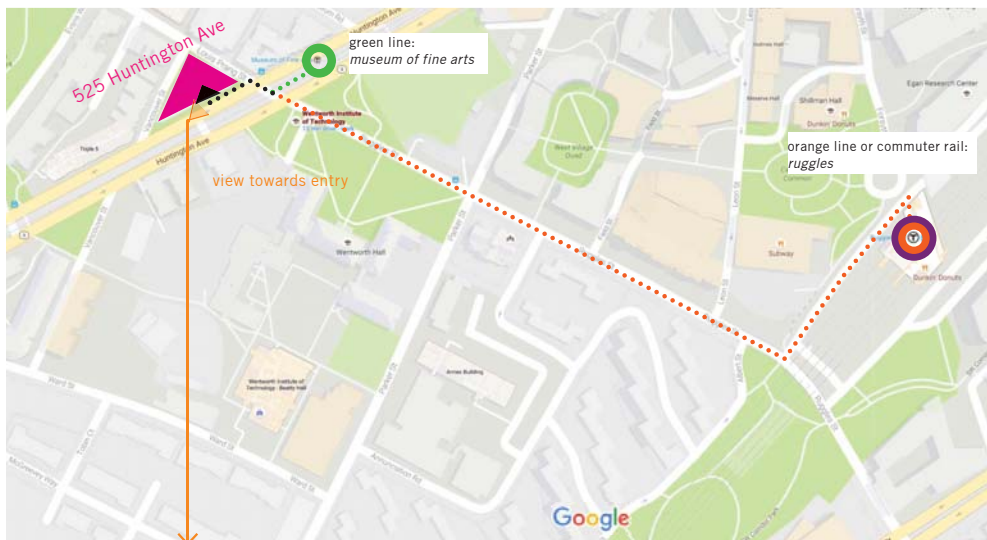
TEAM WIT: 3:30-5:30 Tuesdays at Wentworth Institute of Technology

First Session: TUESDAY October 23rd @ WIT

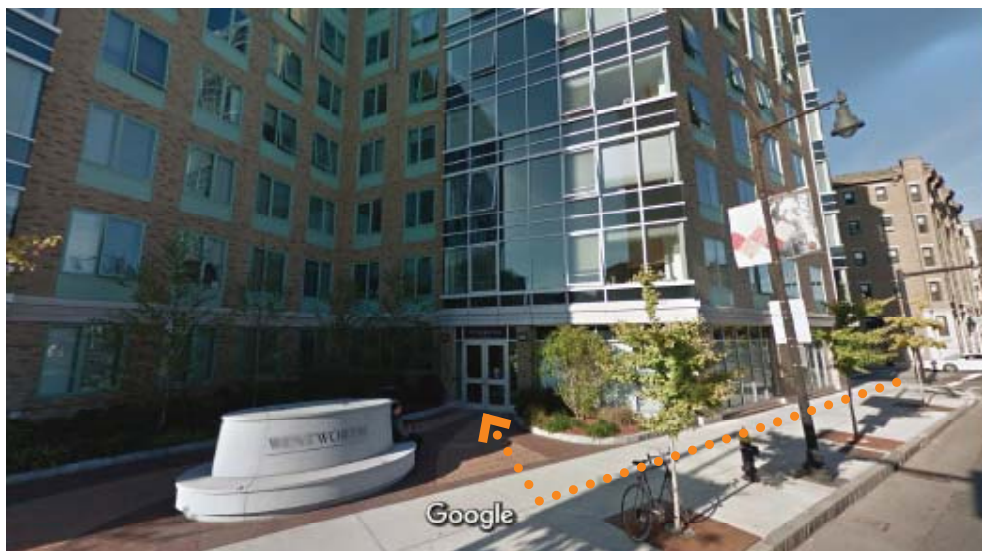
525 Huntington Ave, Boston (Residence Hall)

Room: Community Room. Enter the front door of the building. The community room is the first door on the right in the lobby before entering the residence hall.

Team Leader & Contact: Casey Williams 415.302.9416



MAP: T stops and paths to 525 Huntington Ave.



View: from Huntington Ave. looking towards entry

Questions? Email our Student Coordinator: Ezgi Kosereisoglu
EKosereisoglu@GilbaneCo.com

ACE MENTOR PROGRAM

Career Directions for Students in
Architecture, Construction and Engineering

BOSTON SOCIETY OF ARCHITECTS (BSA) TEAM Location Details

NOTE: WE HIGHLY RECOMMEND ALL STUDENTS ATTEND THE KICK-OFF EVENT ON WEDNESDAY OCTOBER 17TH, 6PM-8PM, WENTWORTH INSTITUTE OF TECHNOLOGY, IN THE WATSON AUDITORIUM. PARENTS & TEACHERS WELCOME. THEN, REGULAR TEAM SESSIONS BEGIN!

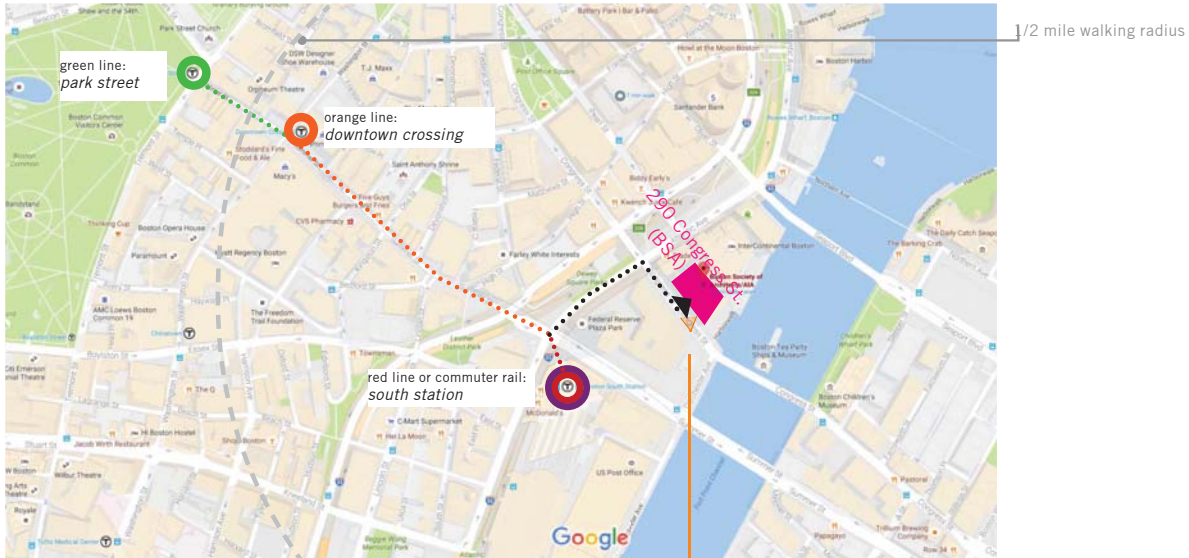
TEAM BSA: 3:30-5:30 Wednesdays at the Boston Society of Architects

First Session: WEDNESDAY October 24th @ BSA

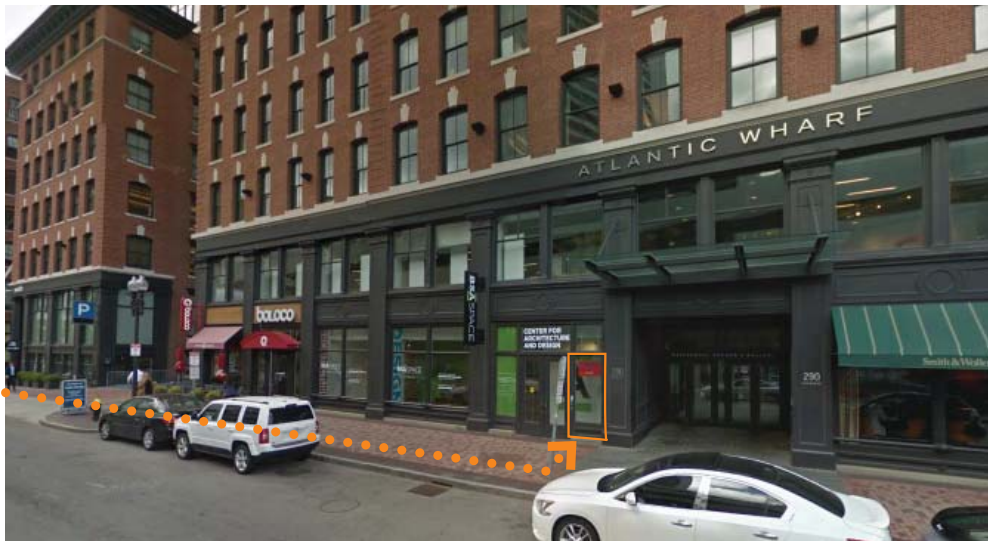
290 Congress Street, Suite 200, Boston, MA

Pearl Street Room. Once inside building, walk up the stairs and ask for assistance.

Team Leader & Contact: Mike Tecci 781-264-3491



MAP: T stops and paths to the BSA Space at 290 Congress St.



View: from Congress St. looking towards entry

Questions? Email our Student Coordinator: Ezgi Kosereisoglu
EKosereisoglu@GilbaneCo.com

ACE MENTOR PROGRAM

Career Directions for Students in
Architecture, Construction and Engineering

SMMA TEAM Location Details

NOTE: WE HIGHLY RECOMMEND ALL STUDENTS ATTEND THE KICK-OFF EVENT ON WEDNESDAY OCTOBER 17TH, 6PM-8PM, WENTWORTH INSTITUTE OF TECHNOLOGY, IN THE WATSON AUDITORIUM. PARENTS & TEACHERS WELCOME. THEN, REGULAR TEAM SESSIONS BEGIN!

TEAM SMMA: 3:45-5:15 Wednesdays at Symmes Maini McKee & Associates Architectural Firm

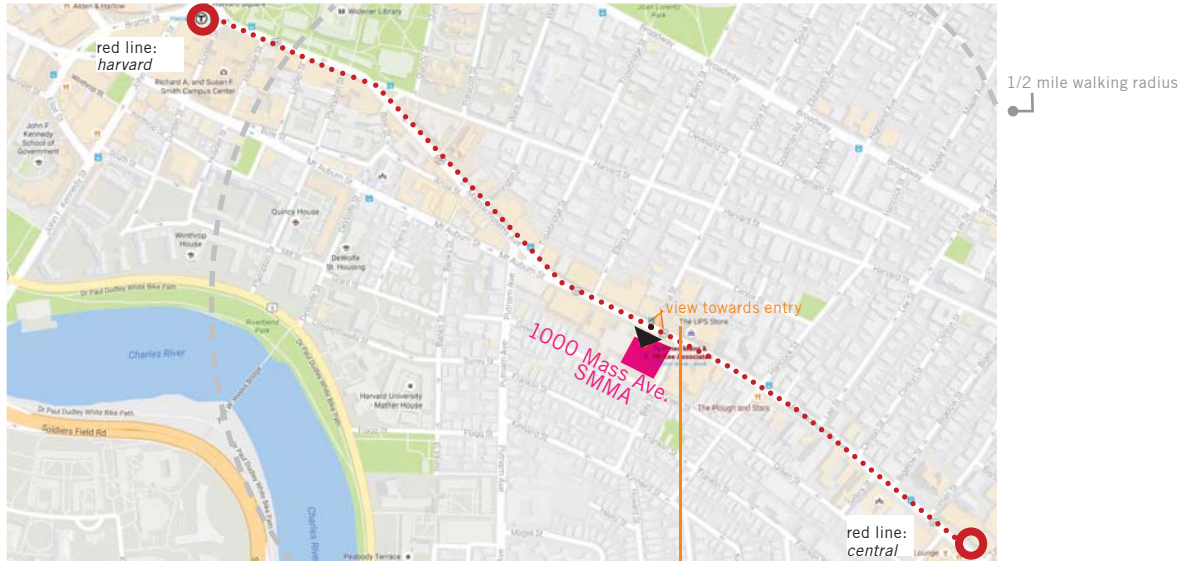
First Session: WEDNESDAY October 24th @ SMMA

1000 Massachusetts Avenue

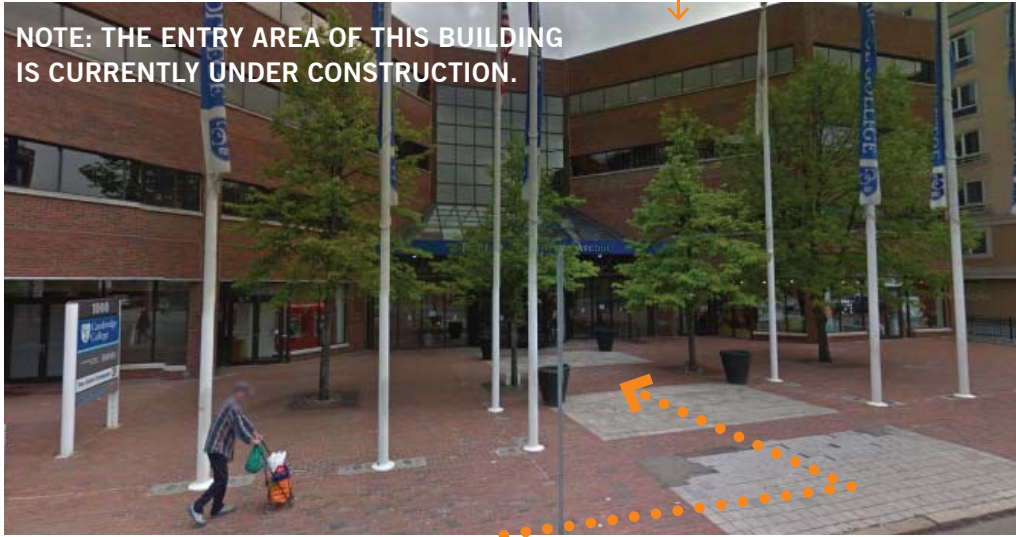
Cambridge, MA

Fourth Floor, Main Conference Room. Enter the building and take the elevator up to Level 4.

Team Leader & Contact: Samantha Farrell 608-513-6301



NOTE: THE ENTRY AREA OF THIS BUILDING IS CURRENTLY UNDER CONSTRUCTION.



View: from Mass Ave. looking towards entry

Questions? Email our Student Coordinator: Ezgi Kosereisoglu
EKosereisoglu@GilbaneCo.com

ACE MENTOR PROGRAM

Career Directions for Students in
Architecture, Construction and Engineering

BENJAMIN FRANKLIN INSTITUTE OF TECHNOLOGY (BFIT) TEAM Location Details

NOTE: WE HIGHLY RECOMMEND ALL STUDENTS ATTEND THE KICK-OFF EVENT ON WEDNESDAY OCTOBER 17TH, 6PM-8PM, WENTWORTH INSTITUTE OF TECHNOLOGY, IN THE WATSON AUDITORIUM. PARENTS & TEACHERS WELCOME. THEN, REGULAR TEAM SESSIONS BEGIN!

TEAM BFIT: 3:30-5:30 Thursdays at the Benjamin Franklin Institute of Technology

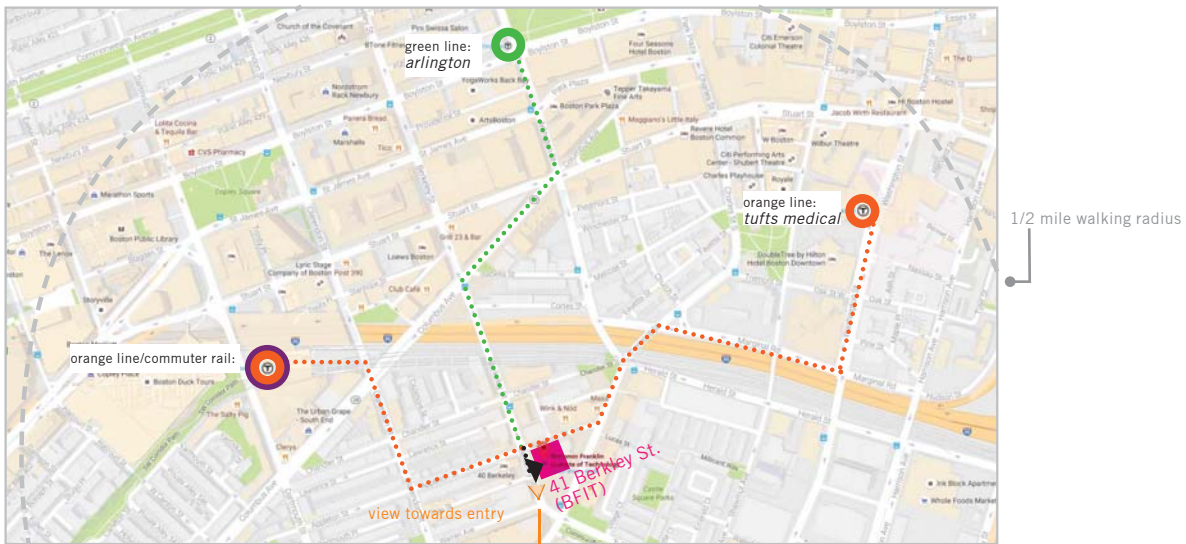
First Session: THURSDAY October 25th @ BFIT

41 Berkley Street

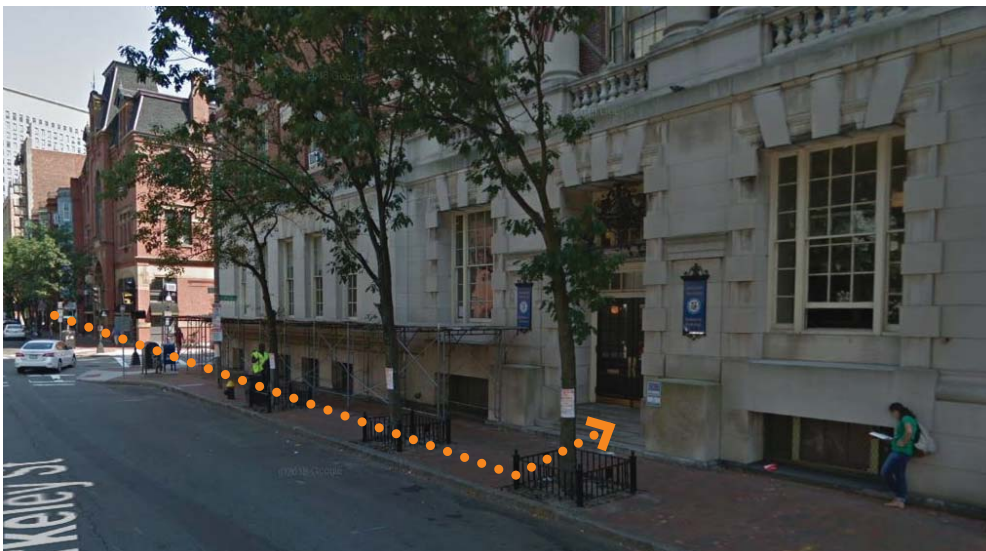
Boston, MA

Room: Classroom - TBD

Team Leaders: Cory Mills 717-576-8335 and Thu Ngan Han 215-251-1220



MAP: T stops and paths to BFIT



View: from Berkley St. looking towards entry

Questions? Email our Student Coordinator: Ezgi Kosereisoglu
EKosereisoglu@GilbaneCo.com



ACE MENTOR PROGRAM

Career Directions for Students in
Architecture, Construction and Engineering

STUDENT KICK-OFF EVENT // 10.17.18

Wentworth Institute of Technology

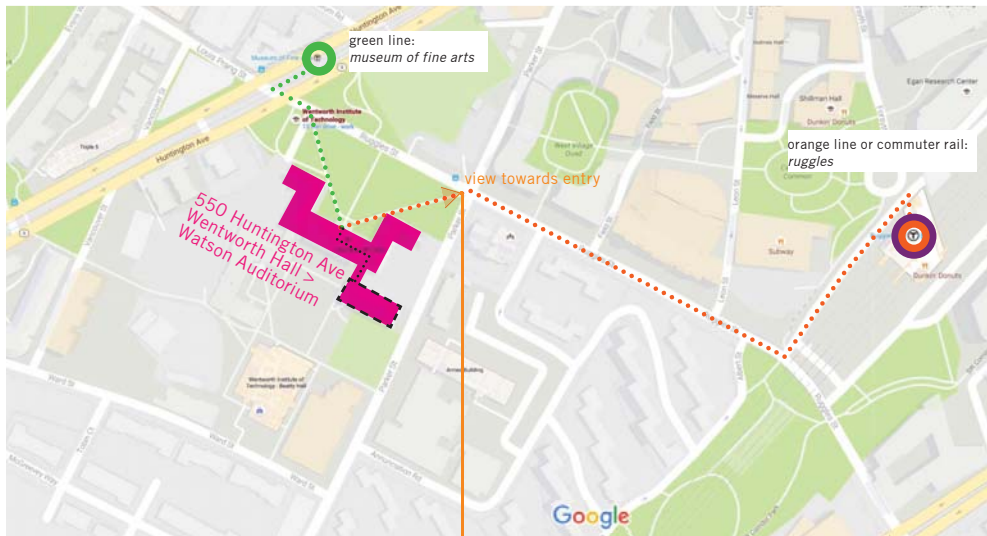
WEDNESDAY October 17th, 2018

550 Huntington Ave, Boston

Building: Wentworth Hall, Room: Watson Auditorium

We highly recommend all students attend the kick-off event on Wednesday, October 17th at Wentworth Institute Technology's Watson Auditorium, 6-8pm. Parent, guardian, and teacher attendance encouraged and welcome.

- Discover more about each career explored in ACE.
- Choose the fields you are most interested in.
- Receive valuable information about the upcoming year



MAP: T stops and paths to 550 Huntington Avenue



View: from Ruggles St./Parker St. looking towards entry

Learn More About:

Architecture

Interior Design

Landscape Architecture

Civil Engineering

Structural Engineering

Mechanical/Electrical/
Plumbing Engineering

Construction Management

The Trades/Skilled Labor

Questions?

Email our Student

Coordinator:

Ezgi Kosereisoglu

EKosereisoglu@GilbaneCo.com