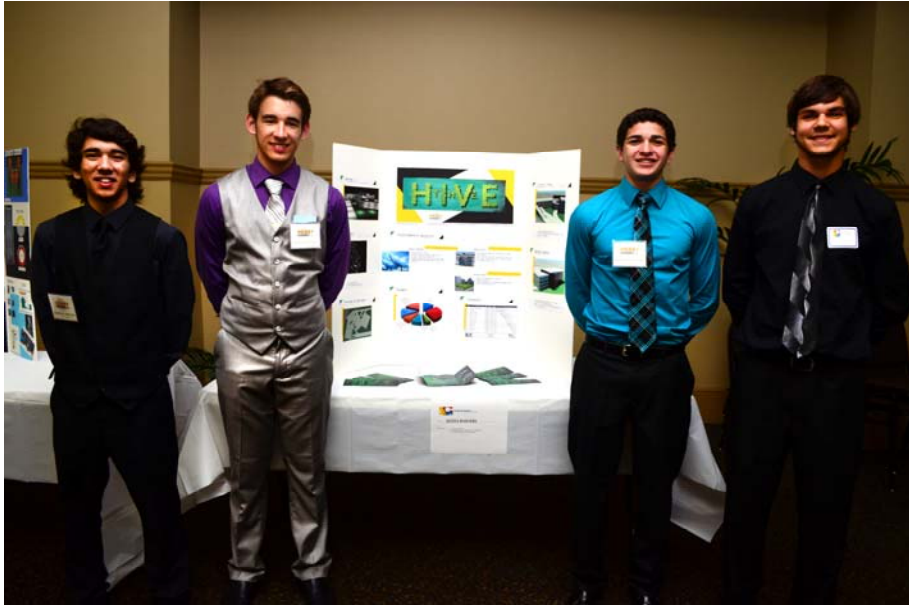


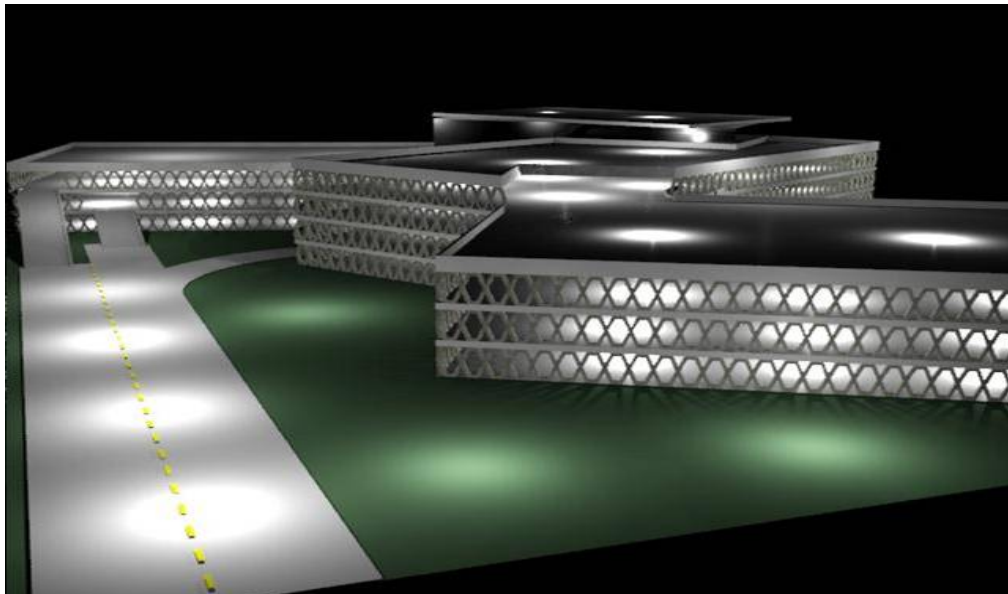
What do a bee hive and a parking garage have in common? Apparently for four students from Lake Mary High School there is a huge connection. These students won the local competition for the ACE Mentor Program of Central Florida at the annual banquet on May 16th. The students answered a Request for Proposal for a Parking Garage “outside the box”. Their conceptual design was for a parking garage located in Sanford next to a new Sunrail stop. It combined parking (for both autos and bicycles) along with retail for those using the Sunrail.



(Left to right) G. Ovelar, D. Glinski, B. Elkins, A. Bence

A bee hive attracts worker bees for a common purpose and they proposed that local residents would flock to this beautiful “hive” design to park their auto and grab some breakfast before they set off to work by train. On the way home they might engage in grocery shopping or even drop off clothing at the dry cleaners. To view the 3-D design visit:

<http://www.youtube.com/watch?v=06QbTLxW6jE>



This relevant and well thought out design won the hearts of the judges: Nathan Butler, C.T. Hsu + Associates, Scott Herlitzka, Jacobs Engineering, and Jeremy Dawkins, Wharton Smith. There were 3 other professional presentations from teams of students from Lyman, Oviedo, Lake Howell, and Winter Park High Schools and five scholarships were awarded overall.



Many thanks to the team leaders: Donald Arsenault-Flachmeier, Matern Professional Engineering, Inc, Travis Kolbjornsen, Walt Disney World Co. FAM, Rick Goldman, PCL, Jonathan Sheppard, PCL and all the mentors named below that made this past year a huge success!

Josh Allison, PCL	Erin Joseph, SKANSKA
Wayne Alred, PCL	Joe Knous, Calic Group
Luis Bedoya, BBM Structural	Laura Lewis, TLC Engineering for Architecture
Bill Bryant, Turner Construction	Stephen Long, Inland American
Doug Campbell, PMA	Leah Matern, Matern Professional Engineering
Brian Carolan, Crossman & Co	Tim McLaughlin, United Wall Systems
Jay Casper, Nodarse & Associates	Binh Nguyen, Perkins + Wills
Nick Chapman, AVCON	Pat Painter, South Milhausen
Shane Clark, C.T. Hsu & Associates	Val Rasul, Matern Professional Engineering
Robert Donahue, Matern Professional Engineering	Lance Reams, PSI
Bill Finrock, Finrock	Ryan Renardo, AVCON
Georgiana Foote, Foote Steel	Matt Robinson, RS&H
Dan Frohardt, PCL	Jason Vargas, WBQ Engineering
Rachel Frohardt, PCL	Paul Verlander, Paul Verlander Landscaping Design
Kristin Gray, Turner Construction	Jeremy Voss, PCL
Brandon Hiers, AVCON	Karen Williams, HKS Architects
Roy Jones, Nemours Foundation	

The mission of the ACE Mentor Program is **to engage, excite and enlighten high school students to pursue careers in architecture, engineering and construction through mentoring and to support their continued advancement in the industry.** Nationally, ACE has 62 affiliates in 36 states with almost 5,000 mentors reaching over 8,000 students. Since its inception, ACE has awarded over \$12 million in scholarships. This past year, participating firms that provided mentors contributed over \$10 million worth of *pro bono* time. ACE Mentor Program was awarded the **2010 Presidential Award for Excellence in Science, Mathematics, and Engineering Mentoring (PAESMEM)**, the nation's highest award for mentoring. For further information, visit www.acementor.org. To become a mentor next year contact Judy D'Angelo at jdangelo@matern.net. High school students, who wish to enroll for next year, must do so after July 15th at www.acementor.org/students.