

ACE MENTOR PROGRAM

OF WASHINGTON

INDUSTRY LEADERS RECEPTION

*Career Directions for High School Students in
Architecture, Construction, and Engineering*

TUESDAY, JUNE 10, 2025
5 - 7 PM

The Shop
LMN Architects
723 First Avenue
Seattle, WA



ACE MENTOR PROGRAM
ARCHITECTURE • CONSTRUCTION • ENGINEERING

 **20 YEARS**
SEATTLE • BELLEVUE • TACOMA



SPONSORS & SUPPORTERS

SUSTAINING FIRMS*

Platinum (\$10,000)

HARGIS*

MAGNUSSON
KLEMENCIC
ASSOCIATES



Structural + Civil Engineers



Partnering Organizations

American Council of Engineering Companies, Washington*

Design Build Institute of America, Northwest Chapter*

Electric League of the Pacific Northwest

Structural Engineers Foundation of Washington

SPONSORS & SUPPORTERS

SUSTAINING FIRMS*

Gold (\$5,000-\$9,999)



MACKENZIE.



Mortenson



Sellen
Community
Foundation



Stantec*

SENECA
GROUP



CORNERSTONE
General Contractors

SKANSKA

SPONSORS & SUPPORTERS

SUSTAINING FIRMS*

Silver (\$2,500-\$4,999)

Affiliated Engineers, Inc.*
Ascendent LLC
Boulder Associates
Coughlin Porter Lundeen*
DCI Engineers*
DOWL
Hermanson
Howard S. Wright, a Balfour Beatty Company*
Integrus Architecture*
JTM "Softball Champions"
KPFF Consulting Engineers*
Malsam Tsang Structural Engineering
Matt Griffin
Miller Hull Partnership*
Mithun*
TCF Architecture
University Mechanical Contractors, Inc.
Valley Electric*
Venture General Contracting
ZGF Architects*

Bronze (\$1,000-\$2,499)

Cairncross Hempelmann*	Northshore Exteriors
Coffman Engineers*	P2S, Inc.*
DLR Group*	Patriot Fire Systems*
FREIHEIT Architecture*	Ron Wright and Associates/Architects*
Hensel Phelps	Stirrett Johnson
Holmes US	Swenson Say Faget
Langan+Navix*	TY Lin
McKinstry Company*	Wood Harbinger*

Iron (\$500-\$999)

Abbott Construction	Performance Contracting, Inc.
ACCO Engineered Systems	



SENECA GROUP

Arlington
Nashville
Seattle

senecagroup.com

Seneca Group is proud to support the ACE Mentor Program's mission and the work they do.

Congratulations to all the scholarship recipients!

Cornerstone General Contractors provides preconstruction and construction management services in Western Washington to build community-based spaces and facilities for justice, health care, and K-12 education.

We proudly sponsor the ACE Mentor Program, and we look forward to meeting the next generation of Architects, Engineers, and Construction Managers.



CornerstoneGCI.com | 425.481.7460 | Lic.# CORNEGC980J3



BOARD OF DIRECTORS

Bill Christopher, Magnusson Klemencic Associates | Secretary/Treasurer
Brad Strandquist, Magnusson Klemencic Associates | Vice President
Bryan Tokarczyk, GRID Engineers
Candace Conroy, AGC Education Foundation
Casey Riske, Miller Hull Partnership
Debi Hudacek, Seneca Group | Vice President
Jeff Klein, PCS Structural Solutions
Jen Caudle, FREIHEIT Architecture
Jon Magnusson, Magnusson Klemencic Associates | Founder
Kalin Magruder, Sellen Construction
Kyle McLeod, Hainline
Mahi Demissie, Vulcan
Maria Herrera-Lofton, Seattle Public Schools
Mark Gardner, McKinstry
Matthew Woo, Wood Harbinger
Melissa Moffett, Tacoma Public Schools
Mike Thomson, P2S, Inc.
Osama Quotah, LMN Architects
Pete Maslenikov, Skanska | President
Sara Roberts, KPFF Consulting Engineers
Sarah Holstedt, Arcadis | Vice President
Terry Scanlan, Cairncross & Hempelmann
Tess Wakasugi-Don, GLY Construction
Troy Thrun, Stantec
Van Collins, ACEC Washington
and Angela Gottula Twining | Executive Director

SCHOLARSHIP COMMITTEE

Andrew Powell, Hoffman Construction
Caroline Lemay, Bassetti Architects
Mahi Demissie, Vulcan
Osama Quotah, LMN Architects
Ruth Baleiko, Miller Hull Partnership
Ryan Piper, Hensel Phelps
Sara Roberts, KPFF Consulting Engineers | Chair
Troy Thrun, Stantec

PROGRAM

Welcome & Sponsor Recognition

Pete Maslenikov, Skanska | ACE President

Platinum Sponsor Remarks

Shannon Brush, Hargis

Jeff Klein, PCS Structural Solutions

Stephen Pool, Magnusson Klemencic Associates

Outstanding Mentor & Mentor Recognition

Brad Strandquist, Magnusson Klemencic Associates | ACE Vice President

Scholarship Recipients

Sara Roberts, KPFF Consulting Engineers | ACE Scholarship Committee

SKANSKA

Skanska shapes the Seattle community
by building what matters.



ABOUT ACE

ACE is a 501(c)3 not-for-profit with a mission to introduce students to careers in the integrated building industry. Originating in New York in 1994 and now headquartered in Philadelphia, ACE has **75** affiliates in the United States and Canada.

ACE is the only program that introduces high school students to the full process of designing and building a project, as well as all facets of the design and construction industry. Since 2001, more than **4,500** Puget Sound students have participated in ACE, with graduates receiving just shy of **\$1.4 MILLION** in scholarships.

ACE works! About **75%** of seniors who complete ACE study an A/E/C field at a university or trades program. Locally, last year **100%** of ACE students surveyed agreed that ACE taught them how the different disciplines in the design/construction industry work together to create and build a structure. Now, countless ACE alumni are back in Seattle, working for firms that mentored them and even mentoring themselves with ACE!

LEARN MORE AT WWW.ACEMENTOR.ORG



Arcadis is proud to support the **ACE Mentor scholarship program in the Puget Sound.**

We congratulate all of this year's scholarship recipients!



Arcadis. Improving quality of life.

MISSION, GOALS, VALUES

MISSION STATEMENT

To engage, excite, and enlighten high school students to pursue careers in architecture, engineering, and construction through mentoring and continued support for their advancement into the industry.

PRIMARY GOALS

- Help build a large, diverse, and better-prepared workforce.
- Prioritize engaging students and communities traditionally under-represented in the industry.
- Assist and guide students by providing scholarships, internships, and mentoring as they pursue career pathways into the industry.

CORE VALUES

- **Collaboration:** We believe a spirit of mutually beneficial collaboration will produce the greatest results and maximize our volunteer and fiscal resources.
- **Excellence:** We aspire to deliver the highest quality and most impactful mentor program and commit to approach our work with fairness and honesty.



Sellen and the Sellen Community Foundation are proud supporters of the ACE Mentor Program.



Sellen



Sellen
Community
Foundation

LEARN MORE
www.sellen.com/scf

PROGRAM HIGHLIGHTS

This year **372** students from **82** high schools participated in ACE, joining **274** professional mentors from **92** local A/E/C firms and forming **16** teams that covered Seattle, Bellevue, Tacoma, and a virtual option.

Many incredible things have occurred this year, including:

- The **UW TACOMA SCHOOL OF ENGINEERING AND TECHNOLOGY** hosted a unique ACE student event in February, where students were able to play with the remote-controlled excavators in the Geotech Lab.



- Many ACE students formed teams to participate in the **ASCE POPSICLE STICK BRIDGE COMPETITION** in March... with one ACE team winning First Place Overall with a bridge that held 218 pounds!



- Another successful **ACE DAY AT MICROSOFT** in April enabled students to take a behind-the-scenes tour of the new Executive Briefing Center and below-grade tunnel spaces, plus participate in small group career discussions.

- Several ACE teams submitted an entry for the Construction Industry Roundtable's **NATIONAL ACE STUDENT DESIGN COMPETITION** with one ACE team qualifying to present their design in Washington, D.C.! Three Ingraham High School students and one Seattle Prep student, plus two mentors from LMN and Skanska, traveled to D.C. in April to present the Tacoma Transit Tapestry, a multi-modal transit hub.

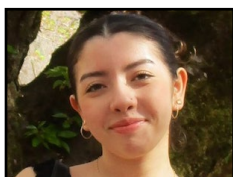


- In April, our nominee for the National **EXEMPLARY SCHOOL CHAMPION AWARD** was selected and awarded a trip to a leadership seminar at the University of Nebraska in Omaha. Congrats to Melissa Moffett of IDEA High School in Tacoma, our nominee this year!

ACE SUPPORTS STUDENTS

It is estimated this ACE program runs on a \$1.5-million budget, with much of that provided as in-kind donations of volunteer time (and pizza!). Funds from corporate partners, professional organizations, and individuals (like mentors, parents, and other supporters), go toward administrative costs, insurance, events, and more. It costs about \$295 per student to run ACE, but these donations allow ACE to be offered free of charge for students!

The majority of donated funds are given as scholarships to students pursuing A/E/C majors in college, but funds also go toward programs like the [ACE SUMMER CAMP](#) at University of Colorado, Denver. This year six ACE students will attend Summer Camp, thanks to your donations!



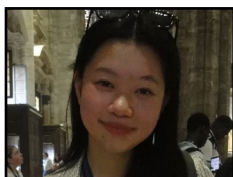
**Ashley
Contreras Avila**
Raisbeck Aviation



**Avery
Smith**
Mount Si



**Avnish
Dingo**
Nikola Tesla STEM



**Dahlia
Huang**
Garfield



**Melody
Sakiya**
International Community



**Noah
Herman**
IDEA

THANK YOU

Thank you **LMN Architects** for facilitating our use of The Shop.

Thank you **LANGAN+Navix** for printing the programs.

Thank you **Portrayals Portrait Studio** for the photography services.

Catering was provided by **Green Apple Events and Catering**.

WOMEN IN ENGINEERING

ACE is pleased to support the **WOMEN IN ENGINEERING ENDOWMENT**, made possible by several sizable donations and a focused fundraising campaign. The endowment committee has announced its second Women in Engineering **ALUMNA AWARD**, for an ACE alumna pursuing engineering. Congratulations to **Madison Kulinski**, a graduate of Interlake High School and rising junior at University of Wisconsin-Madison (Class of 2027), pursuing mechanical engineering. She is receiving a \$5,000 ACE alumni scholarship.



Madison says: *"One in five mechanical engineering students at the University of Wisconsin are women and that's ABOVE national average. The number of female engineers in the workforce is even lower. When I am the only woman in the room, there's a little more bravery required. At ACE, I never had a female mentor for the mechanical engineering team and I was there for three years. I had five mentors. When I graduate, I'm looking forward to being the first female ME mentor I have met."*

Invest in Each Other

PROUD TO SUPPORT ACE
MENTOR PROGRAM

G • L • Y



A photograph of three students in a classroom or workshop setting. Two students are seated at a desk, looking at a tablet and a laptop. A third student is standing behind them, looking over their shoulders. On the desk, there is a laptop, a tablet on a stand, and a plate of food. In the background, a large monitor displays a city street scene. The image has a blue tint and is overlaid with large, semi-transparent letters 'K', 'S', 'E', 'D' on the left side.

sparking interest
inspiring purpose

THANK
YOU!

students & mentors

H A R G I S
proud ACE Program Partner

SCHOLARSHIP RECIPIENTS

Alfred Ryan Esquivel Gonzalez



High School: Newport High School

Years in ACE: 2

College: Lake Washington Institute of Technology (then University of Washington)

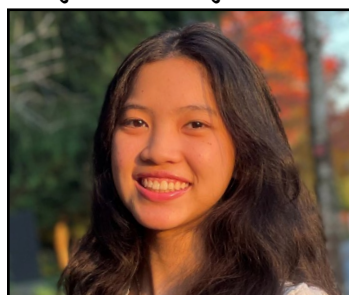
Intended Major: Construction Management

Fun Fact: Alfred Ryan started his own business finding used sneakers, cleaning them up, and reselling them online, learning quite

a bit about entrepreneurship, marketing, and money management.

Alfred Ryan says: *"ACE provided me with clarity at a crucial point in my life, affirming that construction management aligns perfectly with who I am and who I want to become. As I transition from high school to college, the mentorship I've received will remain invaluable. My mentors didn't just give me career advice — they gave me perspective, resilience, and belief in myself."*

Angelina Nguyen



High School: Interlake High School

Years in ACE: 1

College: University of Washington

Intended Major: Mechanical Engineering

Fun Fact: Angelina is passionate about volunteering in the community, participating with organizations like the Seattle Design Festival, Toys from the Heart, and Thriving Elements,

where she created workshops focused on introducing young girls to STEM.

Angelina says: *"Being part of ACE has been one of the most valuable experiences of my life. Under the program, I have learned more than architecture, construction, and engineering. I have learned communication, collaboration, design, and how to apply these skills to real-life situations. Thank you for this program to let me live my inner child's dreams to touch the world and surround myself with others who share a passion for designing dreams."*



SHAPING THE WORLD OF THINGS TO COME

CLICK TO
LEARN MORE



Mortenson

LET'S
REDEFINE
POSSIBLE

BUILDING BETTER FUTURES WITH ACE



Proud Member & Sponsor of ACE

Want a better outcome for your project? We do. Our team of design and construction performance management experts believe better is always possible.

Congratulations to ACE for their 20+ year impact of encouraging, empowering, and inspiring the builders of tomorrow!

We want to hear your journey. Connect and share with us!

[in](#) [f](#) [t](#) [@](#) www.oacsvcs.com



SCHOLARSHIP RECIPIENTS

Brooke VanRavenswaay



High School: Curtis Senior High School

Years in ACE: 3

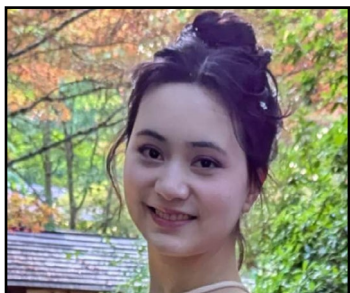
College: University of Colorado (Boulder)

Intended Major: Environmental Science
(emphasis in architecture)

Fun Fact: A violinist in the Tacoma Youth Symphony Association, Brooke participated in a chamber orchestra to play for Dolly Parton at the Washington state launch of the Imagination Library in 2023.

Brooke says: *"My mentors taught me that architecture is more than just buildings by knowing I am more than just an ACE student. My mentors connected with Brooke the violinist, Brooke the runner, Daffodil Princess Brooke, and Brooke the future architect, and worked with me to design something for each of them. Because of them, I learned to create something more than a building: a space where every person feels known."*

Charlotte Middleton



High School: Newport High School

Years in ACE: 1

College: University of Washington

Intended Major: Civil (Structural) Engineering
(minor in architecture or urban planning)

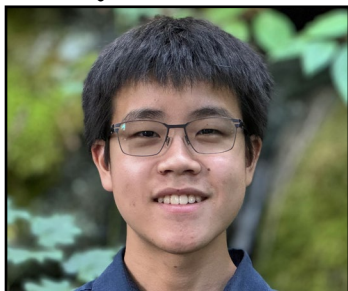
Fun Fact: Fluent in Mandarin, Charlotte has been learning Chinese dance since she was four, performing, training, and receiving

awards not only locally but also in places like Beijing and Hong Kong.

Charlotte says: *"Before participating in ACE, I thought that architects were the main players in the building industry. In ACE, I discovered there are many different professions that are team players in this industry, and they play equally important roles. Now I feel confident that I want to study civil engineering, and also have a better understanding of the path I need to take to focus on structures and buildings."*

SCHOLARSHIP RECIPIENTS

Eli Ng



High School: Gibson Ek High School

Years in ACE: 1

College: University of Washington

Intended Major: Architecture

Impressive Fact: Eli displays an incredible amount of fortitude and commitment to his learning, as he was diagnosed with cancer late last year and has continued with both

his schooling and ACE while undergoing treatment.

Eli says: "We draw in pen." One of the mentors said this during a brainstorming session and it really stuck with me. This simple phrase completely changed my perspective on the design process architects go through. They drew in pen because every idea was worth something – even the ones with skewed, imperfect lines. Small moments like these helped shape my evolving view of what architecture truly is."



WHAT ARE WAYS TO SUPPORT LOVED ONES BATTLING CANCER?

For the second consecutive year, an ACE student has received the life-changing diagnosis of cancer. In support of our student and other young people compelled to take on this challenge, we have compiled some ideas. Make a difference today!

- Give blood or platelets
[Bloodworks NW](#) or [American Red Cross](#)
- Donate funds
[Leukemia & Lymphoma Society](#), [Fred Hutch](#), [St. Jude](#), [Seattle Children's Research Institute](#), [American Cancer Society](#), [Stand Up 2 Cancer](#)
- Get Active
[Obliteride](#), [Relay for Life](#), [The Big Climb](#), [Race for the Cure](#)
- Create to donate
think: hats, blankets, dolls, etc.
- Register at Be The Match
[National Marrow Donor Program](#)
- Volunteer your time
[Seattle Children's](#), [Ronald McDonald House](#), [Cancer Lifeline](#), [Cancer Pathways](#)
- Take a drive
[Road to Recovery](#)

all links available to click in online program

SCHOLARSHIP RECIPIENTS

Hager Gamaleldin



High School: Roosevelt High School

Years in ACE: 3

College: University of Washington

Intended Major: Architecture

Fun Fact: Hager is incredibly active at Roosevelt, participating in the thespian club, debate team, sports boosters, student government, and National Honors Society

-- most of them for all four years!

Hager says: *"Throughout my high school experience, I had been searching for a passion that perfectly mixed my love for my culture and my eagerness to design. This void was filled when I was introduced to ACE. I have been able to solidify my passion for architecture through this program, and it has made me want to pursue architecture in college."*

Heribert Mendoza



High School: IDEA High School

Years in ACE: 3

College: Washington State University

Intended Major: Construction Management

Fun Fact: Heribert is definitely a hands-on learner, as he has learned welding, soldering, and modeling with Autodesk Fusion 360, which he used in the IDEA Wood Shop.

Heribert says: *"ACE has been instrumental in steering me towards construction. ACE provided me with real-life scenarios, hands-on work, and professionalism that happen day-to-day in construction. The more I learn every day, the more I realize that construction management is for me."*

ACE STUDENTS & VOLUNTEER MENTORS —

Congratulations on a Great Year!



For over two decades, Magnusson Klemencic Associates has been a proud sponsor of the ACE Mentor Program of Washington.

**CONGRATULATIONS TO
ALL THE SCHOLARSHIP
WINNERS!**



We look forward to working with the next generation of AEC leaders!



MAGNUSSON
KLEMENCIC
ASSOCIATES

Structural + Civil Engineers



SCHOLARSHIP RECIPIENTS

Madeline Holland



High School: Bothell High School

Years in ACE: 2

College: California State Polytechnic University

Intended Major: Construction Management

Fun Fact: Maddie started the Washington chapter of The Wishing Crane Project, a nonprofit that creates origami cranes (and

sometimes hosts interactive folding lessons) for hospitals, hospice centers, public displays, corporate events, and more.

Maddie says: *"The possibility of construction management as a career path was something that I never knew was possible before ACE, opening my eyes to the whole building industry. After college, I hope to come back and work in Seattle and become an ACE mentor myself, helping students find their passion and create comfortability, like my mentors did for me."*

Olivia Rodrigo Dermody



High School: Seattle Preparatory Academy

Years in ACE: 1

College: Columbia University

Intended Major: Mechanical Engineering

Fun Fact: An active runner, Olivia was captain of the Seattle Prep cross country and distance track teams, junior coach for Girls on the Run for elementary school students,

and voted Most Inspirational by her cross country team her junior year.

Olivia says: *"The most valuable lesson I've learned through ACE is to just try. There were moments when I was worried about being wrong or not having the perfect answer, but I realized that offering ideas, even if they're not perfect, is the first step toward growth. ACE taught me that design is about the problem-solving and process that comes before the final project, and it is within that process and by taking risks that I can grow as a designer and engineer."*

SCHOLARSHIP RECIPIENTS

Preston So



High School: Bellevue Big Picture High School
Years in ACE: 3

College: University of Washington

Intended Major: Mechanical Engineering

Fun Fact: Preston has been on the Varsity Golf Team for four years, qualifying for district and state tournaments, volunteering with First Tee of Greater Seattle (coaching young

golfers), and receiving a PGA Junior League All-Star Award.

Preston says: *"Before joining ACE, I greatly overlooked the importance of the construction industry, which has been and continues to be overshadowed by the more glamorous technology fields. However, through my 3 years with the program, I have discovered how the construction industries are the core of our society. One of my favorite parts of the experience was learning about the various disciplines involved in constructing a building, along with their roles and responsibilities."*

**LMN has been a proud
sponsor of the ACE Mentoring
Scholarship Program since 2001!**

Congratulations to all of this year's scholarship recipients!

LMN
lmnarchitects.com

SCHOLARSHIP RECIPIENTS

Rowan Dean



High School: Roosevelt High School

Years in ACE: 3

College: California State Polytechnic University

Intended Major: Construction Management

Fun Fact: Rowan has some impressive ultimate Frisbee skills, playing on the RHS Varsity team for four years (qualifying for

the national tournament happening *this week*), playing on a U17 club team and winning the national competition, and a coaching middle school team.

Rowan says: *"One area where ACE has benefited me is with my leadership skills. Now in my third year, I am a person new students can look up to and I share advice and help them on their path. I will always be grateful for how ACE provided so many valuable lessons and developed my skills as a student and a leader."*

Samiksha Singh



High School: Stadium High School

Years in ACE: 1

College: University of Washington

Intended Major: Electrical and Computer Engineering (emphasis on sustainable energy systems)

Fun Fact: Sam has participated as a Tacoma Tree Foundation volunteer, Bryant Montes-

sori School tutor, Gurudwara Singh Sabha cultural temple food preparer, and Pierce County Daffodil Festival community goodwill ambassador.

Sam says: *"While I already knew what field I wanted to pursue, ACE helped immensely in steering my passions and understanding the different aspects of electrical engineering. As I learned more about electrical concepts, branches, and current innovations through MEP meetings, I was repeatedly reassured that I love this field, and that has been such a wonderful feeling as it makes me even more excited for my future."*

SCHOLARSHIP RECIPIENTS

Sienna Mayo



High School: Decatur High School

Years in ACE: 2

College: Stanford University

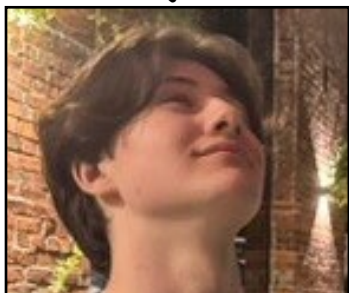
Intended Major: Mechanical Engineering

Fun Fact: Sienna stayed very busy at DHS, participating in Key Club, DECA, Speech & Debate, tennis, and bowling!

Sienna says: *"The most valuable lesson ACE*

taught me wasn't just technical – it was philosophical. Engineering, at its core, is about building solutions to ensure safety, efficiency, and satisfaction. It's about translating the wildest architectural ideas into practical reality. ACE didn't just help me decide on a major – it helped me find my calling."

Silas Hughes



High School: Garfield High School

Years in ACE: 2

College: Carnegie Mellon University

Intended Major: Architecture

Fun Fact: Silas is an outdoors enthusiast, participating in Post 84 (a student-run outdoors leadership program), backpacking through the Cascades and Olympic Peninsula

with the YMCA, and serving as a Junior Guide for the UW Botanic Gardens (Arboretum) day camps.

Silas says: *"My ACE mentors helped me feel what it is like to work on an architecture project. Walking home, even from school, I think about the project in ACE, things I wish I could discuss and ask. At the end of ACE, I usually leave wishing it could go even longer. I like how architecture is about communicating with the other disciplines to work through problems, and I enjoy the idea of solving problems in a way that also makes things better than they were."*



PCS Structural Solutions
ACE Platinum Sponsor

INSPIRATION + ENGAGEMENT = IMPACT

PCS is proud to support the ACE Mentor Program. By investing in students today, we're giving them a launchpad to tremendous community impact as future AEC leaders.



Seattle | Tacoma | Portland | pcs-structural.com

MENTORS

INDIVIDUAL TEAM LEADERS IN BOLD; ACE ALUMNI MENTORS*

REQUEST FOR PROPOSAL TEAM

These mentors worked with ACE leadership to create the RFP for the 2024-2025 student project, and served as “Owner’s Representatives” all year.

Alec Thomas, Great Expectations
Blair Greenberg, Seneca Group
Conner Hayes, Blitz Holdings
Marks Brewbaker, Seneca Group
Matthew White, LIHI

Michael Moriarty, Seneca Group
Michelle Wilkinson, Seneca Group
Nicky Kamemoto Lyons, Seneca Group
Robyn Gordon, Seneca Group

TUESDAY EASTSIDE TEAM 1

Brent Robinson, Retired
David Malone, UMCI
Dylan Kimber, Abbott
Ethel Vural, Pfizer
Julia Hild, Abbott
Julian Anderson, Jacobs
Justin Wolkenstein-Giuliano, Jacobs*
Mark Sharp, Jacobs

Paul Chu, HNTB
Sarah Wood, Jacobs
Solaiman Salahi, OAC
Sophia Michener, HNTB
Stephen Siebert, AESI
Steve Bueler, UMCI
Yun Chi Chang, Jacobs*

TUESDAY EASTSIDE TEAM 2

Andrew Deoki, Stantec
Brett Conway, Mackenzie
Caitlin Eckert, GLY
Chloe Dumas, Tetra Tech
Danielle Johnson, HNTB
Eric Marsh, Skanska
Kevin Axt, Tetra Tech
Kimberly King, Venture

Kody Sanders, Tetra Tech
Kreed Askin, Tetra Tech
Louis Peiser, Northwest Architects
Mark Epstein, Sound Transit
Michael Thomson, P2S
Michael Chen, Mackenzie
Robert Kramer, Tetra Tech
Sue Arongna, Tetra Tech

WEDNESDAY EASTSIDE TEAM 1

Alexis Bourdeix, Mortenson
Amanda Lauck, Otak Inc.
Ava West, Mortenson
Bryan Tokarczyk, GRID
David Truong, Mortenson
Grant Jordan, Mortenson*
Jared Chapman, Mortenson
Jason Goetz, Holmberg Mechanical
Joseph Tremblay, Valley Electric
Josiah Cline, SpaceX*

Justin Kim, McKinstry
Kasey Denson, Valley Electric
Lindsay Martin, Otak*
Luke Deschenes, Mortenson
Maddy Haut, Mortenson
Mark Drzewiecki, Mortenson
Paige Adkinson, Mortenson
Stephen Murakami, Hutteball + Oremus
Taylor Howe, Valley Electric

MENTORS

INDIVIDUAL TEAM LEADERS IN BOLD; ACE ALUMNI MENTORS*

WEDNESDAY EASTSIDE TEAM 2

Andrew MacDonald, RAFN
Carly Langer, Wood Harbinger
Daniel Polgreen, Freiheit
Davis Wright, CKC Structural
Geoff Hartway, PCI
Julia Collins, Freiheit
Matthew Woo, Wood Harbinger
Mingxi Zhu, Freiheit
Mitchell Hughey, Wood Harbinger

Mohammed Turkmen, CKC Structural
Nikki Chinprapinporn, Amazon
Paul Greenwalt, Wood Harbinger
Reese Thompson, PCI
Shu Ki Chan, HDR Inc.*
Spencer Marshall, Wood Harbinger
William Lundgren, Freiheit
Zach Tang-Bodiford, Turner

MONDAY SEATTLE TEAM

Alexander Muirhead, P2S
Anna Victoria, Arcadis
Ashley Wells, Stantec
Bill Meyer, Clark
Bill Turnipseed, P2S
Daquan Proctor, WRNS
Elaine Duong, KPG Psomas
Elizabeth Espitia, MKA

Grace Nemeckay, Arcadis
Jonathan Kershner, WRNS
Ryan Thornton, MKA
Saya Kajiwara, MKA*
Sean Prendergast, P2S
Spenser Petherick, P2S
Turner Solterman, MKA



Proud Supporter of the **ACE MENTOR PROGRAM**

Congratulations to all the ACE scholarship winners. May you have a rewarding career in our exciting and always changing industry. We look forward to working with you to lean into challenges, pay attention to details, and create iconic projects that shape our community.

hoffmancorp.com



License: HOFFMCC164NC

MENTORS

INDIVIDUAL TEAM LEADERS IN BOLD; ACE ALUMNI MENTORS*

TUESDAY SEATTLE TEAM 1

Alexander Jolly, ZGF
Carolyn McCann, KPFF
Catherine Bausinger, ZGF
Chloe Sams, Hoffman
Darien Schneider, KPFF
Daviel Salgado, CES
Drew Thompson, ZGF
Ella Yazbeck, KPFF
Emily Skalka, ZGF
Finn Anderson, KPFF
Hannah Chessman, ZGF
Joel Sterling, ZGF
Katie Knight, KPFF

Kurt Christensen, Hoffman
Nadiya O'Dell, Hoffman
Patrick Young, KPFF
Pauline Sok, Stantec
Phuos Huynh, ZGF
Rachel Dorr, KPFF
Rick Castleton, Hoffman
Robert Morgan, Stantec
Robert Thomas, KPFF
Sophie Lee, Hoffman
Will Kesler, KPFF
Yomi Adeyemi, ZGF

TUESDAY SEATTLE TEAM 2

Amira Sherbiny, Skanska
Angelo Herrera, Coffman
Astra Persue, Skanska
Bridget McFaul, CPL*
Christopher Martin, LMN
Defne Celtikci, LMN
Graham Condit, Skanska
Javier Diaz, CPL
Jennifer Sasahara, LMN
Joseph Albizures, Coffman

Kai Reckinger, Skanska
Laura Chopp, Coffman
Laura Lindeman, CPL
Michael Wood, CPL
Natalia Nesmeianova, LMN
Sarah Dowthwaite, CPL
Steven Davis, Coffman
Tialin Shaw, Skanska
William Frederick, Coffman

TUESDAY SEATTLE TEAM 3

Aimee Phung, Hargis*
Aubree Nichols, Thomas James Homes
Camille Fain, Turner
Christine Vu, Weinstein A+U
David Roper, Hargis
Elander Steyn, Thornton Tomasetti
Griffey Sarmiento, Hargis
Haley Koch, Hargis

Jake Reny, Hargis
Katrina Springer, Thornton Tomasetti
Kharma Garcia, Hargis
Michael Marone, BRR
Purvash Luhar, WSP USA
Steven Yang, BRR
Will Brechter, Weinstein A+U

MENTORS

INDIVIDUAL TEAM LEADERS IN BOLD; ACE ALUMNI MENTORS*

WEDNESDAY SEATTLE TEAM 1

Akshay Srinivas, Miller Hull
Alex Amimoto, PAE
Alexander Ratcliff, PAE
Becky Skondre, WJE
Carsen Tucker, HSW | BB
Emmanuel Cruz, HSW | BB*
Gordon Krippaehne, HSW | BB
Huzeyifa Aman, HSW | BB
James Sullivan, PAE

Jonathan Nelson, Miller Hull
Julia May, Miller Hull
Lan Nguyen, Swenson Say Faget
Luis Martinez, HSW | BB
Matthew Johnson, SME STEEL
Pailyn Schroeder, Kimley-Horn
Quinn Mackenzie, Malsam Tsang
Victoria Clarke, Miller Hull

WEDNESDAY SEATTLE TEAM 2

Aditi Shreedhar, Mithun
Anisha Chutani, Stantec
Berenice Sanchez, Mithun
Carl Dominguez, Mithun
Carlton Louie, Sound Transit
Casey Moore, Lund Opsahl
Christopher Cattron, Lund Opsahl
Daniel Maier, Glumac
Ellie Elefson, Mayfly Engineering
Emily Everett, Mithun
Erik Larson, Mithun
Jacob Porter, JTM
Jason Wilkinson, Mithun

K Kaczmarek, Mithun
Kerry Garikes, Mithun
Koushik Srinath, Mithun
Lani Lee, Mithun
Lori Manderson, Mithun
Madeline Phillips, Lund Opsahl
Mason Clark, JTM
Mauricio Ayala, Lund Opsahl
Melissa Zhang, Buro Happold
Monseratt Cortes Macias, Mithun
Sean Eakman, JTM
Vincent Huynh, Lund Opsahl

WEDNESDAY SEATTLE TEAM 3

Brady Barkey, HDR
Bryanna Palmer, P2S
Cristina McHugh, Lease Crutcher Lewis
Douglas McArthur, Mackenzie
Erin Darnauer, Mackenzie
Erin Hickey, HDR

Hannah Knoot, Mackenzie
John Feiler, P2S
Jonathan Chow, Lease Crutcher Lewis
Robert Gonia, Mackenzie
Ryan Scharf, Mackenzie
Vivian Lu, P2S

WEDNESDAY VIRTUAL TEAM

Alex D'Avella, OAC
Beatriz Arostegui, MKA
Casey Riske, Miller Hull
Chien-Yi Chu, Integrus

Madeline Johnson, Arcadis
Mony Thach, OAC
Seri Hamm, Hultz/BHU

MENTORS

INDIVIDUAL TEAM LEADERS IN BOLD; ACE ALUMNI MENTORS*

THURSDAY SEATTLE TEAM 1

Alex Young-Desmarattes, KPFF

Allen Suwardi, HOK
Cody McMahan, AEI
Daniel Quigley, HITT
Drew Cusack, HITT
Emily Hope, HOK
Francisco Felix, KPFF
Jannifer Hong, DPR*
Jessie Pan, DPR
Justin Schmit, KPFF

Kiana Eastman, KPFF
Matt Seel, AEI
Megan Warner, HOK
Nicholas Paulay, AEI
Pinaki Acharya, AEI
Samuel Gebremeskel, AEI
Scott Cochran, GGLO
Tammy Kang, KPFF
Xiao Xiao Wen, KPFF

THURSDAY SEATTLE TEAM 2

Alexis Moser, DLR
Andrew Techico, Westlake*
Andrew Ziegler, HNTB
Christopher Perez, DLR
Connor Anderson, Sellen
David Connell, DLR
David Do, DLR
Greeshma Mysore Girish, DLR
Haley Wilson, DLR
Jason Wells, HNTB

Kathi Shoemake, DLR
Leon Holloway, DLR
Meagan Wilkes, Stantec
Rebecca Duff, Sellen
Ryan Luthman, DLR
Sam Margolis, DLR
Sarah Kang, DLR
Scott Mead, DLR
Trushit Karkhanis, Integrated Design

TUESDAY TACOMA TEAM

Bethany Morales, Swenson Say Faget

Erin Kerney, Nature by Design
Gregory Horodyski, Tacoma Power
Innocent Muhalia, Ferguson
Kallie Maas, McInnis Engineering
Karina Bovee, Swenson Say Faget
Kodiak Waldal, Whiting-Turner

Leah Engelhardt, Lydig
Melissa Nordquist, Ferguson
Rich Julien, Whiting-Turner
Sarah Commet, Stitts Hill
Scott Kubiszewski, LCL
Theo Boyles, McKinstry

WEDNESDAY TACOMA TEAM

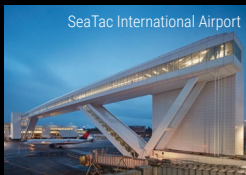
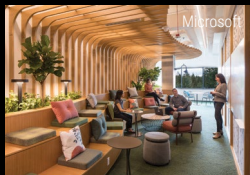
Albert Peterson, Danard
Ben Fraser, Tunista
Jacob Morgan, WSP
Jaycob Greissl, PCS
Kenneth Doyle, Danard

Lila Guizado, Rice Fergus Miller
Matthew Sprott, Wedderman
Michael Fillhart, Abbott
Noah Cochran, OAC
Ray Vefik, Retired

ENGINEERING ICONIC PROJECTS

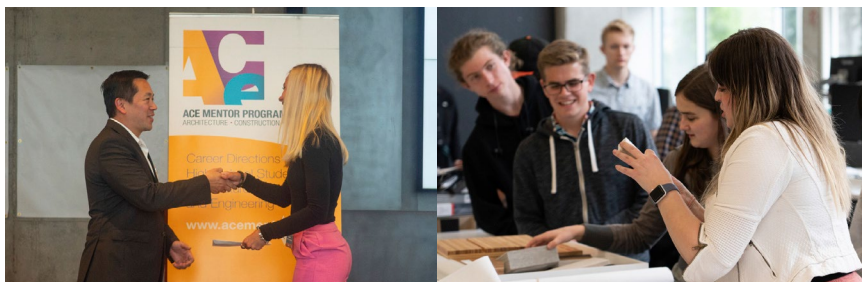


Mechanical | Electrical | Technology | Acoustics | Lighting



720 3rd Avenue, Suite 1500 | Seattle, WA | 206.667.0555

MACKENZIE.



The ACE Mentor Program plays a pivotal role in introducing young people to the world of architecture, engineering, and construction. Mackenzie celebrates more than 15 years of mentorship with ACE in the Pacific Northwest region.

SUPPORT ACE

PLEDGE YOUR SUPPORT FOR THE ACE PROGRAM

Please accept my gift of:

☐ \$1,000

☐ \$500

☐ \$250

☐ \$100

☐ \$50

☐ OTHER: \$_____

Payment Method:

☐ **CHECK ENCLOSED**

Mail to:

ACE Mentor Program of Washington
c/o Magnusson Klemencic Associates
1301 Fifth Avenue, Suite 3200
Seattle, WA 98101

☐ **PAYPAL**

Online:

Find our PayPal link at acementor.org/seattle

Name: _____

Email: _____

Questions? Contact our Executive Director, Angela Gottula, at 425-750-4522.
Thank you for your continued support!

THE ACE MENTOR PROGRAM OF WASHINGTON is a 501(c)3 nonprofit.

CONNECT



"LIKE" US ON FACEBOOK!

WWW.FACEBOOK.COM/SEATTLEACE



FIND US ON LINKEDIN

LINKEDIN.COM/COMPANY/SEATTLEACE



FOLLOW US ON INSTAGRAM!

[@ACEMENTORSEATTLE](https://www.instagram.com/acementorseattle)



SUBSCRIBE ON YOUTUBE

SEARCH "ACE MENTOR WASHINGTON"



MISSION STATEMENT

ACE is a 501(c)3 not-for-profit organization. The program's mission is to engage, excite, and enlighten high school students to pursue careers in the integrated construction industry through mentoring; and to support their continued advancement in the industry through scholarships and grants.