



## IN THIS ISSUE

1. PROGRAM STATISTICS + OVERVIEW
2. PLAYHOUSE - PROGRAM UPDATES
4. COMMUNITY PARKS - PROGRAM UPDATES
6. FIELD DAYS
10. ALUMNI SPOTLIGHT - Q+A
12. SPONSORS
14. SPONSORS
15. MENTORS
16. ADVISORY BOARD
17. BOARD

 @ACEMentorRoch

 @ACEMentorRoc

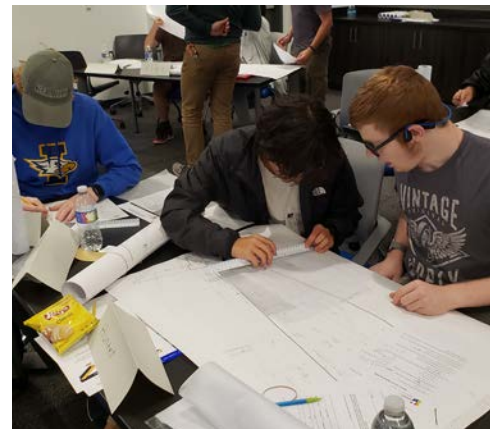
 @ACE Mentor Program of Rochester

rochesterny@acementor.org  
www.acementor.org

## 55 TOTAL STUDENTS FROM 26 SCHOOL DISTRICTS!

The 2024-25 program year is again our largest class of ACE students yet - with a total 55 students between our two programs – Community Parks and Playhouse! Of those students, we had representatives from 26 schools in the Rochester Area, as well as homeschooled students. In addition, we had many returning and new mentors from various disciplines in the ACE field, representing 13 different firms across the region!

Students were able to choose which group they wanted to join - Playhouse or Community Parks. Playhouse focuses on architecture and construction while Community Parks focuses on site redevelopment and civil engineering. Both of the programs have had instruction-based classes, working classes, and hands-on build-day classes. Each program has separate weekly classes, and come together every few weeks for the hands-on trades classes.



# PROGRAM UPDATES

## Playhouse

Our Playhouse program began with several weeks of educational sessions, led by mentors and guests from various ACE-related industries. These interactive and hands-on lessons provided students with a solid foundation in the core aspects of our professions, preparing them for the design and construction of six Playhouses. During these classes, students were organized into groups to collaboratively design their Playhouse. From brainstorming and bubble diagramming to final elevations and plans, this process proved invaluable for the students as they moved forward with the build days.

Following the core lessons on the principles of ACE fields and group design, students gathered at the Issac Training and Education Center for the build days. There, they learned how to use different tools and brought their designs to life, working closely with mentors to construct their Playhouses. With creative touches such as scale windows, rockwalls, toy bins and more, the students successfully built incredible Playhouses. A big thank you to all the volunteer mentors who participated in the build days, and we look forward to partnering with Zoey's Light which will find homes for the playhouses with critically ill children in the community. We invite students and mentors to be present for these deliveries - it is always a very meaningful moment that adds purpose to what we do.







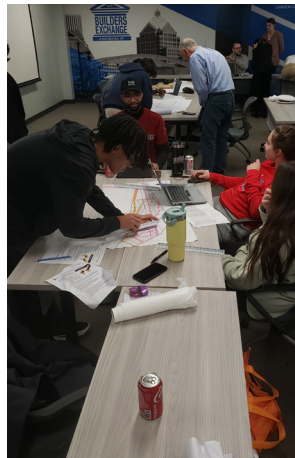
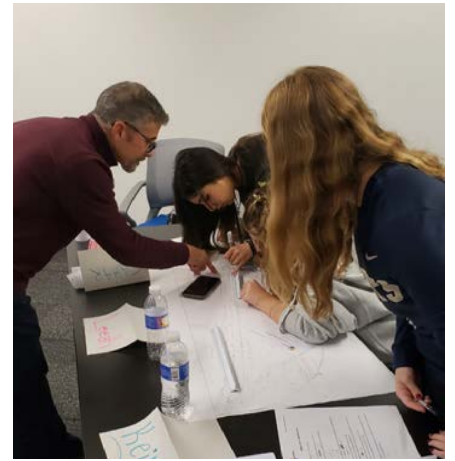
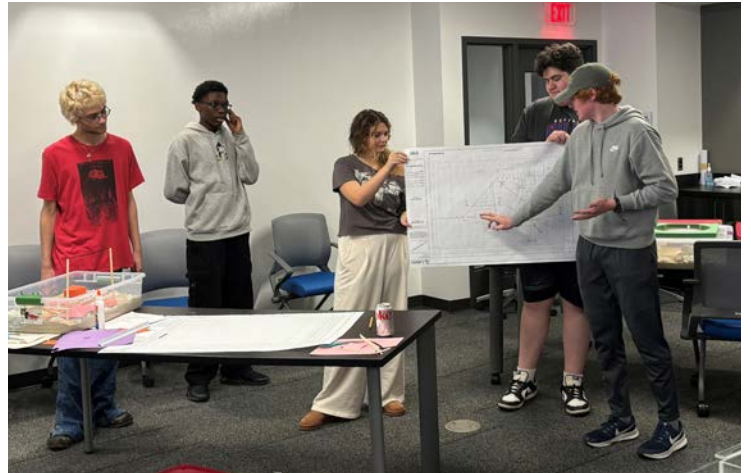


# PROGRAM UPDATES

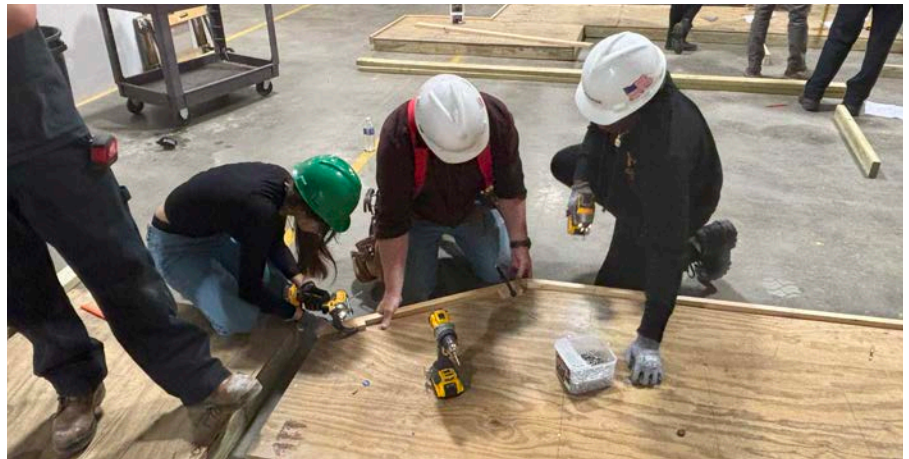
## Community Parks

The Community Parks program kicked off the year with several educational sessions focused on civil engineering, urban planning, and site design. Professionals from these fields visited the class to present on these topics, accompanied by interactive activities. Students then worked in groups to develop bubble diagrams, create site plans, and present their design concepts to each other.

Later in the year, students took on a design-build project where they designed a custom mini golf course for Camp Good Days, an organization that offers summer camps and other events for children and families impacted by cancer. Working collaboratively, students designed the course and created construction drawings to guide their efforts during the build days at the Issac Training and Education Center. With themes ranging from Alice in Wonderland to a race car and a whale, the students truly tapped into their creativity. A huge thank you to all the mentors and volunteers who supported the build days—we're excited to deliver these projects to Camp Good Days, which serves children and families affected by cancer, and see the impact that our work has on the community.









# FIELD DAYS

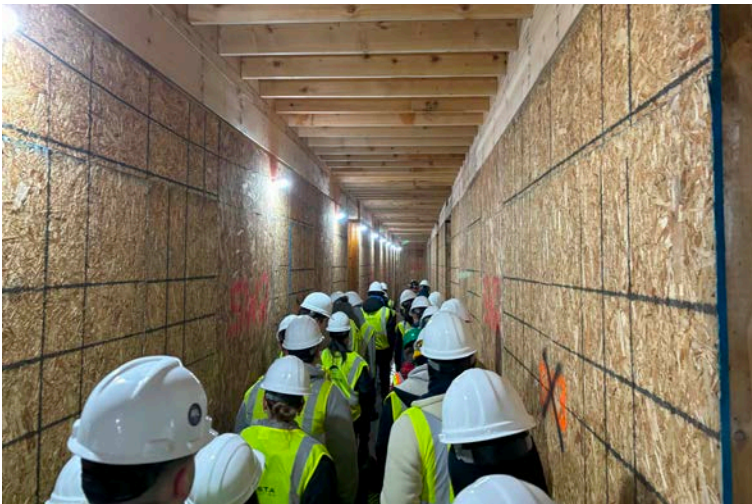
THANK YOU TO THE CONSTRUCTION FIRMS THAT HOSTED  
HANDS-ON FIELD DAYS, WORKSHOPS AND PROJECT SITE TOURS!



COLLEGE TOUR - ROCHESTER INSTITUTE OF TECHNOLOGY



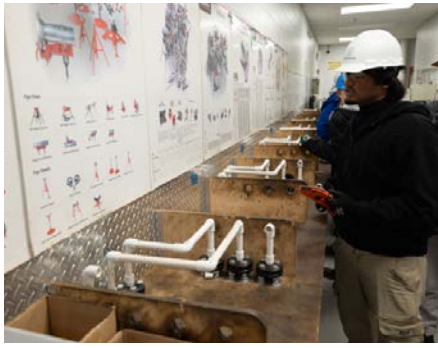
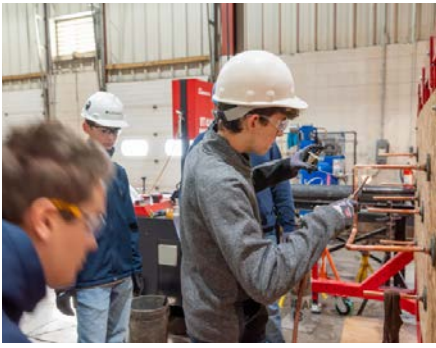
COLLEGE TOUR - ALFRED STATE UNIVERSITY



CENTER CITY JOBSITE TOUR - CHRISTA CONSTRUCTION







PLUMBING CLASS - LOCAL #13



CONCRETE FOOTING COMPETITION - PIKE CONSTRUCTION SERVICES



# FIELD DAYS



SUBSTATION #262 TOUR - ROCHESTER GENERAL ELECTRIC



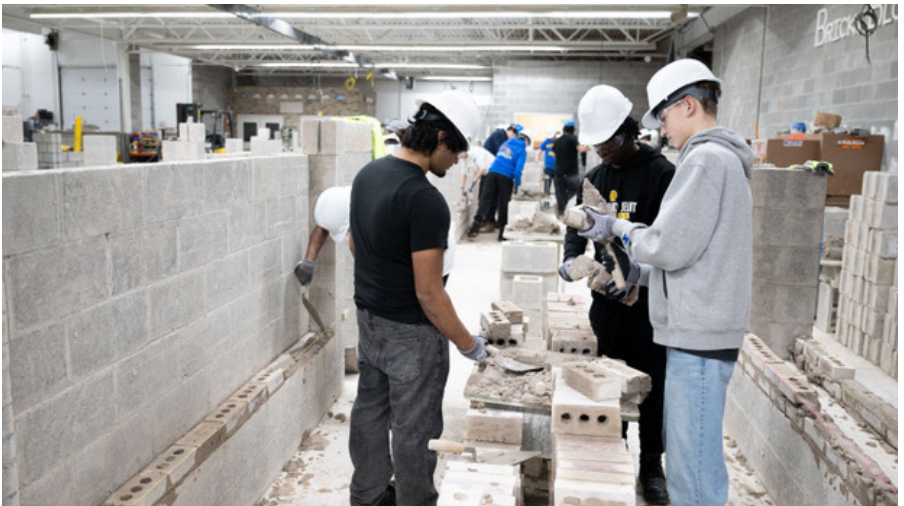
METAL STUD FRAMING COMPETITION - LOCAL UNION 276







ELECTRICAL CONSTRUCTION - NECA TRAINING FACILITY



MASONRY BRICKLAYING CLASS - LOCAL #3



# QUESTION + ANSWERS

## Meet the ACE Alumni



### WHAT IS YOUR NAME, WHAT ACE PROGRAM WERE YOU IN, AND WHAT YEARS DID YOU PARTICIPATE?

My name is Colin Thompson, I was an ACE student in the Playhouse Program for 2 years, from 2017 - 2019.

### WHAT WAS YOUR FAVORITE PART OF THE ACE PROGRAM?

The ACE Mentor Program stands as a truly unique opportunity, offering an unparalleled introduction to the AEC industry. My experience in the program not only solidified my decision to pursue architecture but well prepared me for the start of my academic journey.

### WHAT IS YOUR CURRENT ROLE IN THE ACE INDUSTRY AND HOW DID THE PROGRAM HELP YOU REACH THAT GOAL?

During my time in the ACE program, I gained invaluable insights surrounded by a network of industry professionals and mentors that have continued to be instrumental in my professional growth. I pursued a career in architecture, receiving my Bachelor's of Architecture from Alfred State College in 2024. During college, I had various internship opportunities over the summer, working at Terracon, Bergmann, and Passero Associates, all of which were extremely valuable to my career growth and professional experience. I currently work as an Architectural Designer at CPL in Rochester, NY.



# Meet the ACE Alumni



## WHAT IS YOUR NAME, WHAT ACE PROGRAM WERE YOU IN, AND WHAT YEARS DID YOU PARTICIPATE?

My name is Aidan Hershey, I was an ACE student in the Playhouse Program from 2022 - 2023.

## WHAT WAS YOUR FAVORITE PART OF THE ACE PROGRAM?

My experience in the ACE Program provided me with the right tools for the job when deciding my career path. The mentors poured their time and energy into students and explained everything we learned in a helpful and supportive manner. ACE supplied us not only with great mentors, but practical hands-on activities. Thanks to ACE I was also able to work on team-building and presentation skills. In ACE I have a network of colleagues and experts who I can still turn to for guidance.

## WHAT IS YOUR CURRENT ROLE IN THE ACE INDUSTRY AND HOW DID THE PROGRAM HELP YOU REACH THAT GOAL?

During one of our many field trips, we visited Local 86, the Electrical Union, and while there, I got direct hands-on experience with the field of electric, and what some aspects of the trade looked like. This helped solidify my choice to enter the field of electric post-graduation, and my mentor provided me with further support with my resume and interviewing skills. I now work at Radec Electric in Rochester, NY and work on electrical projects across New York State, including a 150-unit apartment building in Buffalo, NY.



# SPONSORS









# SPONSORS



Not Pictured:  
Pooler,  
Got to Go Electric



# MENTORS



CAITLIN O'LEARY  
MARK JOHNS  
GARY FLISNIK



ALY MANCUSO  
REIHLEY LITTLEFIELD  
LIZ REYNOLDS  
BEN WOLFLING



KE'SHARA WEBB FIELDS  
COLIN THOMPSON



**Schuler-Haas**  
*Electric Corp.*

YUSEF ELY  
JOHN LANGDON  
JASMINE GELSOMINO



MELISSA MUNOZ  
SAM CANNIOTO



STEVEN KUSHNER  
PETER ROETZER



BARBARA BURKE  
KATELYN BURNS  
AIKA AUSSICKER  
CAMILLE COSMIANO  
CALVIN LEUNG  
REED BRODSKY  
STACI TUBIOLO



LeCHASE  
COURTNEY LAFFERTY  
KYRA MCGOEY



TYLER BECKER  
BILL KETCHEN  
KAYLA PLISZKA



ALEXA JOANETTE



MATT FAULKS



BECCA KOHLMAN





# ADVISORY BOARD

*The Advisory Council was established in 2021 to assist the Board of Directors in insuring the well-being and growth of our program. The Council is comprised of leaders from the construction, design, and education industries and will monitor industry trends, business factors, and external forces to determine their impact and/or relevancy to our strategic planning. This group continues to be a great resource to the program and we are thankful for their contributions and leadership.*



**STEVE METZGER**  
LABELLA ASSOCIATES



**WILLIAM DEAN**  
ALFRED STATE



**KEVIN RICKETT**  
SCHULER-HAAS ELECTRIC CORP



**LAVON BUCCIARELLI**  
WEST IRONDEQUOIT HIGH SCHOOL



**BRIAN KELLY**  
MANNING SQUIRES HENNIG



**JAMIE BUCCI**  
SWBR



**GARY FLISNIK**  
COLLIERS ENGINEERING & DESIGN



# BOARD MEMBERS



**GARY FLISNIK**  
PRESIDENT



**BARBARA BURKE**  
VICE PRESIDENT /  
PLAYHOUSE PROGRAM  
DIRECTOR



**KE'SHARA WEBB FIELDS**  
EDUCATION DIRECTOR



**LIZ REYNOLDS**  
EVENTS DIRECTOR



**COURTNEY LAFFERTY**  
COMMUNITY PARKS  
PROGRAM DIRECTOR



**CAITLIN O'LEARY**  
MENTOR DIRECTOR



**ALY MANCUSO**  
MARKETING & COMMUNICATIONS DIRECTOR



**MICHAEL RICHTMYER**  
TREASURER



**YUSEF ELY**  
FUNDRAISING DIRECTOR



**WILLIAM KETCHEN**  
EMERITUS



**BROOKLYN JAGGER**  
ADMINISTRATIVE ASSISTANT



# Engage Excite Enlighten



**@ACE MENTOR PROGRAM OF ROCHESTER**



**@ACE MENTOR ROCH**



**@ACE MENTOR ROC**





**ACE MENTOR PROGRAM**  
ARCHITECTURE • CONSTRUCTION • ENGINEERING

**ROCHESTER, NY**