

ACE MENTOR PROGRAM

OF WASHINGTON

INDUSTRY LEADERS RECEPTION

*Career Directions for High School Students in
Architecture, Construction and Engineering*

TUESDAY, JUNE 13, 2023
5 - 7 PM

**Amazon Oscar Building
SkyCafé**
1007 Stewart Street
Seattle, WA



DOWNLOAD PROGRAM



ACE MENTOR PROGRAM
ARCHITECTURE • CONSTRUCTION • ENGINEERING

20 YEARS
SEATTLE • BELLEVUE • TACOMA



SPONSORS & SUPPORTERS

SUSTAINING FIRMS*

Platinum (\$10,000)

H A R G I S *

MACKENZIE.

MAGNUSSON
KLEMENCIC
ASSOCIATES



Partnering Organizations

American Council of Engineering Companies, Washington* (\$10,000)

Charles Pankow Foundation

Design Build Institute of America, Northwest Chapter* (\$5,000)

Structural Engineers Foundation of Washington (\$5,000)

SPONSORS & SUPPORTERS

SUSTAINING FIRMS*

Gold (\$5,000-\$9,999)



Mortenson



BNBuilders



CORNERSTONE
General Contractors



SENECA
GROUP



Sellen
Community
Foundation

SKANSKA

SPONSORS & SUPPORTERS

SUSTAINING FIRMS*

Silver (\$2,500-\$4,999)

Affiliated Engineers, Inc.*
Andersen Construction
Coughlin Porter Lundeen*
DCI Engineers*
DPR Construction
Howard S. Wright, a Balfour Beatty Company*
Integrus Architecture*
KPFF Consulting Engineers*
Malsam Tsang Structural Engineers
MG2
Miller Hull Partnership*
Mithun*
Northshore Exteriors, Inc.
Valley Electric*
ZGF Architects*

Bronze (\$1,000-\$2,499)

ACCO Engineered Systems	McKinstry Company*
Alliance Partitions	Navix Engineering*
Ascendent, LLC	Northwest Partitions
Bassetti Architects	P2S, Inc.*
Cairncross Hempelmann*	Ron Wright and Associates/Architects*
Coffman Engineers*	Rushing Company
DLR Group*	Stirrett Johnson
Firstline Systems	Swenson Say Faget*
Freiheit Architecture*	VIA - A Perkins Eastman Studio
Hensel Phelps	Wood Harbinger*
Holmes Electric	

Iron (\$500-\$999)

Armour Unserfer Engineering

Carla Keel Group

Otak



Seneca Group is proud to support the
ACE Mentor Program's celebration and
scholarship recipients.

1191 Second Ave., Suite 1500
Seattle, WA 98101
206.628.3150

2011 Crystal Drive, Suite 250
Arlington, VA 22202
202.984.3183



Cornerstone General
Contractors provides
preconstruction and
construction management
services in Western Washington
to build community-based spaces
and facilities for justice, health care,
and K-12 education.

We proudly sponsor the ACE Mentor
Program, and we look forward to meeting
the next generation of Architects, Engineers,
and Construction Managers.

CornerstoneGCI.com | 425.481.7460 | Lic.# CORNEGC980J3



BOARD OF DIRECTORS

Bill Christopher, Magnusson Klemencic Associates | Secretary/Treasurer

Brad Strandquist, Magnusson Klemencic Associates | Vice President

Bryan Tokarczyk

Casey Riske, Miller Hull Partnership

Debi Hudacek, Seneca Group | Vice President

Jen Caudle, FREIHEIT Architecture

Jon Magnusson, Magnusson Klemencic Associates | Founder

Kyle McLeod, Hainline

Larry Swartz, P2S, Inc.

Mahi Demissie, Vulcan

Maria Herrera-Lofton, Seattle Public Schools

Mark Gardner, McKinstry

Matthew Woo, Wood Harbinger

Melissa Moffett, Tacoma Public Schools

Pete Maslenikov, Skanska | President

Rob Widmeyer, LMN Architects | Past President

Sara Roberts, KPFF Consulting Engineers

Sarah Holstedt, Arcadis | Vice President

Sarah Patterson, AGC Education Foundation

Terry Scanlan, Cairncross & Hempelmann

Troy Thrun, Stantec

Van Collins, ACEC Washington

and Angela Gottula Twining | Executive Director

SCHOLARSHIP COMMITTEE

Sara Roberts, KPFF Consulting Engineers | Chair

Caroline Lemay, Bassetti Architects

Mahi Demissie, Vulcan

Ruth Baleiko, Miller Hull Partnership

Ryan Piper, Hensel Phelps

Troy Thrun, Stantec

THANK YOU

Thank you to Amazon and JLL for facilitating our use of the SkyCafé.

Thank you to Navix Engineering for printing the programs.

Catering was provided by Green Apple Events and Catering.

PROGRAM

Welcome & Sponsor Recognition

Pete Maslenikov, Skanska | ACE President

Platinum Sponsor Remarks

Michael Chen, Mackenzie

David Fields, Magnusson Klemencic Associates

Brendon Inman, Hargis

Outstanding Mentor & Mentor Recognition

Brad Strandquist, Magnusson Klemencic Associates | ACE Vice President

Scholarship Recipients

Sara Roberts, KPFF Consulting Engineers | ACE Scholarship Committee



Skanska salutes ACE students and the partners that support the next generation of industry professionals.

SKANSKA

usa.skanska.com

ABOUT ACE

ACE is a 501(c)3 not-for-profit with a mission to engage, excite, and enlighten high school students to pursue careers in the integrated construction industry through mentoring. Originating in New York in 1994, ACE is a national program with **77** affiliates in the US & Canada.

ACE is the only program that introduces high school students to the full process of designing and building a project, as well as all facets of the design and construction industry. Since 2001, an estimated **3,800** Puget Sound students have participated in ACE, with graduates receiving just shy of **\$1,250,000** in scholarships.

This year **246** students from **56** high schools participated in ACE, joining **226** professional mentors from a *record* **85** local A/E/C firms and forming **12** mentoring teams in Seattle, Bellevue, and Tacoma.

ACE works! About **75%** of seniors who complete ACE study an A/E/C field at a university or trades program. More than **80%** of ACE students surveyed agree ACE taught them skills and knowledge of the building industry. Plus, countless ACE alumni are back in Seattle, working for firms that mentored them and even mentoring themselves with ACE!

Proud Supporter of the **ACE MENTOR PROGRAM**



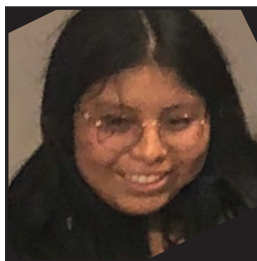
ACE SUPPORTS STUDENTS

It is estimated this ACE program runs on a \$1.5-million budget, with much of that provided as in-kind donations of volunteer time (and pizza!). Funds from corporate partners, professional organizations, and individuals (like mentors, parents, and other supporters), go toward administrative costs, insurance, events, and more. It costs about \$295 per student to run ACE, but these donations allow ACE to be offered free of charge for students!

The majority of donated funds are given as scholarships to students pursuing A/E/C majors in college, but funds also go toward programs like the **ACE SUMMER CAMP** at University of Colorado, Boulder. This year four ACE students will attend Summer Camp, thanks to your donations!



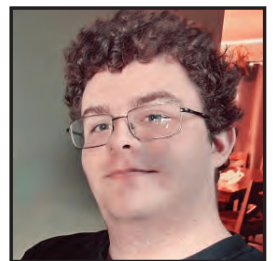
Brianna Ong
Redmond



Isis Salvador
Mount Rainier



Preston So
Bellevue Big
Picture



Vi Wood
Mountlake
Terrace

Sellen and the Sellen Community Foundation are proud supporters of the ACE Mentor Program.



Sellen
Community
Foundation



LEARN MORE

www.sellen.com/scf

SCHOLARSHIP RECIPIENTS

Boden Kaminski-Willard



High School: Roosevelt High School

Years in ACE: 2

College: University of Colorado, Boulder

Intended Major: Architectural Engineering

Fun Fact: Boden has been a community activist for years, participating in activities such as campaigning for a 46th District state representative, founding a climate

action group, and volunteering as a Boy Scout.

Boden says: *"Participating in ACE has been one of the best opportunities for me to practice and fine tune my university and career goals. I was able to validate through hands-on practice and cross-team collaboration that a career in construction would meet my career objectives. Moreover, I could picture my adult self enjoying this role."*

Emily Van



High School: TAF@Saghalie

Years in ACE: 1

College: University of Washington

Intended Major: Construction Management & Architecture (dual degree program)

Fun Fact: Emily recalls first taking an interest in architecture when visiting the impressive Hanoi Opera House in Vietnam

as a child; her family moved to the United States when she was only six.

Emily says: *"I've realized that architecture has always been the field that's meant for me. Thinking about becoming an architect excites me in many ways, as I can utilize my artistic and mathematical skills to succeed in the field. It's a perfect combination and balance of both that allows me to express myself creatively. The vision I have for myself is to become an architect who can impact the world, similar to how many have affected me."*



team beyond
the project

THANK
YOU!
students & mentors

H A R G I S
proud ACE Program Partner

SCHOLARSHIP RECIPIENTS

Emma McCook



High School: Roosevelt High School

Years in ACE: 3

College: University of Bath (U.K.)

Intended Major: Architecture

Fun Fact: Emma's volunteer efforts often include working with young children, including leading kids on mountain climbing expeditions, doing science experiments at

birthday parties and summer camps, and teaching piano lessons.

Emma says: *"In my time at ACE, I have learned to give the most attention to my wildest ideas. I've learned that there's always a way to problem-solve and mold a suggestion into something possible, but the only way to create a showstopping structure is to start with the biggest, most impossible ideas."*

Gabriella Korb-Nice



High School: Lincoln High School (Seattle)

Years in ACE: 1

College: United States Naval Academy

Intended Major: Engineering

Fun Fact: Ella was a ski instructor this past winter at the Summit at Snoqualmie and has participated in ski racing with the Summit Performance Alpine Race Club.

Ella says: *"My interest in engineering developed because I love the intersection of math, science, and problem-solving; my mentors allowed me to see the ways that additional skills are just as critical to designing and completing a project. Overall, ACE has solidified my plan to study engineering in college because I can see the many ways that engineers work together to positively impact society in a tangible, meaningful way."*

SCHOLARSHIP RECIPIENTS

Hailey Pittiglio



High School: Holy Names Academy

Years in ACE: 4

College: Tulane University

Intended Major: Architecture

Fun Fact: Hailey is a four-year Varsity gymnast at Holy Names, serving as team captain and qualifying for the state competition in most of her events, two years in a row.

Hailey says: *"For the past four years [in the ACE program], I have made connections with amazing mentors who are incredibly passionate and influential in their fields. My mentors have opened my eyes to all the different aspects of creating a structure and how buildings are so much more than the materials they are made from."*



Arcadis is proud to support the **ACE Mentor scholarship program** in the Puget Sound.

We congratulate all of this year's scholarship recipients!



Arcadis. Improving quality of life.

SCHOLARSHIP RECIPIENTS

Kelsey Mackenzie



High School: Inglemoor High School

Years in ACE: 3

College: California Polytechnic State University

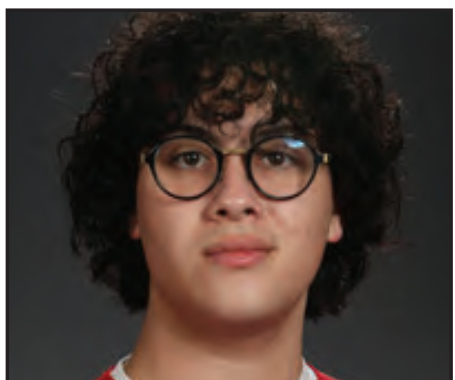
Intended Major: Architecture

Fun Fact: While Kelsey participated in badminton, crew, and equestrian sports, she says crew, where she is the coxswain, has

been the most impactful on her confidence and decision-making skills.

Kelsey says: *"[My] mentors have encouraged wild ideas, and I have come to the understanding that without pushing the boundaries, I'll never do anything new. That's the most important lesson from ACE, the one that I'll take into college, because in the dreary face of repetitive glass towers, I can and should continue to find ways to do more, create original designs, and keep elements that excite me."*

Lucca Castillo



High School: Cleveland STEM High School

Years in ACE: 2

College: University of Washington

Intended Major: Architecture

Fun Fact: At Cleveland, Lucca served as secretary of the Art Club, founded the Chess Club, and recently joined the Racial Equity Team dedicated to advocacy.

Lucca says: *"I developed a great relationship with my mentors for both years I participated in ACE. They taught me a lot of valuable lessons and taught me how to communicate my ideas effectively. They inspired me to keep pursuing my path as I could see the genuine passion that they all held for their work. ACE has been an invaluable resource for the betterment of my future. I hope to keep the same sense of community I felt at ACE with me throughout my entire professional career."*

For over two decades,
Magnusson Klemencic Associates
has been a proud sponsor of the
ACE Mentor Program of Washington.



CONGRATULATIONS TO ALL THE 2022-2023 TEAMS!



BUILDING FUTURES

Together!

MAGNUSSON
KLEMENCIC
ASSOCIATES



Structural + Civil Engineers

SCHOLARSHIP RECIPIENTS

Mathangi Sriram



High School: North Creek High School

Years in ACE: 4

College: Cornell University

Intended Major: Architecture

Fun Fact: Matu has been performing Indian classical music (Carnatic music) since third grade; she is credited with knowing more than 300 pieces of music!

Matu says: *"ACE truly gave me the push to widen my horizons and look at the whole picture. As the years went on, I paid more attention to the details that built into the final product from across disciplines to understand bits of how everything worked. I wanted to learn about what a true career in architecture entails beyond drawing up floor plans and proposing designs."*

Nicole Chambliss



High School: Inglemoor High School

Years in ACE: 2

College: California Polytechnic State University

Intended Major: Civil/Structural Engineering

Fun Fact: As President of the IHS National Honor Society, Nicole coordinated volun-

teer events like environmental cleanups and food/clothing drives, ultimately logging 200+ hours of community service.

Nicole says: *"My ACE mentors helped show me that engineering can be incredibly fun and rewarding. From cracking jokes about the other disciplines to coming up with silly ways to convey our structural plans on the slides, my mentors showed that engineering can be accessible and entertaining.... I will always remember that engineering is fun, no matter how difficult the math and physics courses can be along the way."*

SCHOLARSHIP RECIPIENTS

Noah Beckford



High School: Henry M. Jackson High School

Years in ACE: 3

College: University of Washington

Intended Major: Civil Engineering

Fun Fact: Noah got his start learning about structural engineering from YouTube, but he more recently expanded that knowledge

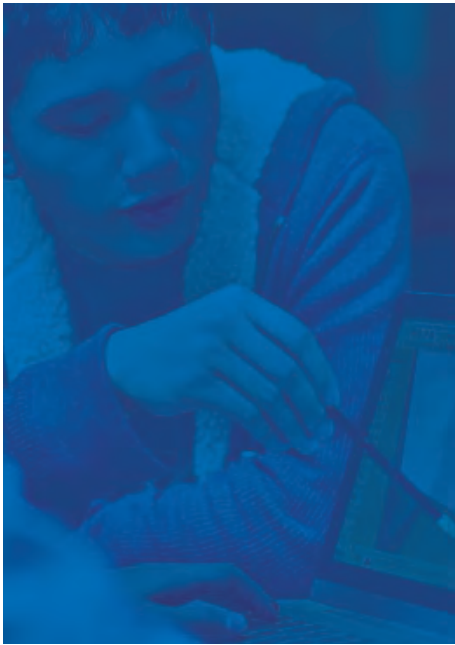
base with a summer internship experience at DCI Engineers.

Noah says: *“The most valuable lesson I learned [in ACE] is humility; I realize that even my mentors don’t know everything, that’s the beauty of the industry, how you can rely on other experts to create a great product. I am not afraid of being too stupid for a job, I can ask questions and put in the effort to understand how things work, all I have to do is continue to grow.”*



**SHAPING THE
WORLD OF THINGS
TO COME**

[CLICK TO
LEARN MORE](#)



**LMN has been a proud
sponsor of the ACE Mentoring
Scholarship Program since 2001!**

Congratulations to all of this year's scholarship recipients!



**BNBUILDERS
IS PROUD
TO SUPPORT
THE ACE
MENTOR
PROGRAM**

Safety **Community** Innovation
Sustainability Knowledge

www.bnbuilders.com

SCHOLARSHIP RECIPIENTS

Piper Newman



High School: Holy Names Academy

Years in ACE: 3

College: University of Colorado, Boulder

Intended Major: Civil/Environmental Engineering

Fun Fact: Piper spent three weeks last summer backpacking with a student group through Yellowstone and the Grand Tetons;

she gained mountaineering skills, experience with navigation technology, and courage and confidence.

Piper says: *"I will always be grateful for the time and energy the mentors provided me during my years at ACE. I value helping others in my community, and ACE inspired me to continue to do this in my career through mentorship. ACE mentors showed me, through a variety of roles, how engineering can have a significant impact on our cities and citizens. ACE [has helped] me think through my career and how to make other people's lives better."*

Quincy Purcell



High School: Roosevelt High School

Years in ACE: 1

College: Case-Western Reserve University

Intended Major: Mechanical Engineering

Fun Fact: Quincy enjoys photography and cinematography, participating in the RHS photography club but also flying drones and recording and editing aerial footage.

Quincy says: *"ACE has been an extremely valuable resource for me to learn about construction and the many different jobs and perspectives needed to build a structure. The mentors have all done a great job of illustrating the responsibilities and focuses of each discipline involved in construction."*

SCHOLARSHIP RECIPIENTS

Sabrina Li



High School: Roosevelt High School

Years in ACE: 2

College: University of Washington

Intended Major: Architecture

Fun Fact: Sabrina has always been interested in creative writing and visual arts, and was able to complete an Art Corps internship where she designed and painted

a public mural on an urban farm.

Sabrina says: *“Getting the chance to learn from the mentors’ expertise helped give me a feel for what the professional environment feels like and exposed me to several options for career choices. After two years of witnessing the workspace energy and camaraderie between the mentors, I could really picture myself following their path and growing into the same role.”*

Yoshi Takeno



High School: Roosevelt High School

Years in ACE: 3

College: University of Washington

Intended Major: Civil Engineering (urban and transportation planning)

Fun Fact: Yoshi has been a tenor saxophonist in the RHS Jazz Band for all four years of high school, and earlier this year performed

at the Essentially Ellington Jazz Festival in New York City.

Yoshi says: *“Participating in ACE exposed me to different employment pathways within the construction industry. ACE also helped me learn how to work with people in teams and on projects. I feel better prepared for entry into an engineering program due to my experience in ACE.”*

BUILDING BETTER FUTURES WITH ACE



Proud Member & Sponsor of ACE

Want a better outcome for your project? We do. Our team of design and construction performance management experts believe better is always possible.

Congratulations to ACE for their 20+ year impact of encouraging, empowering, and inspiring the builders of tomorrow!

We want to hear your journey. Connect and share with us!

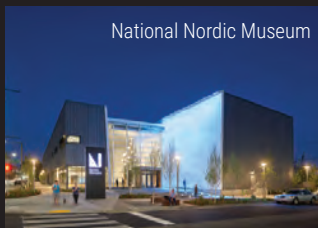
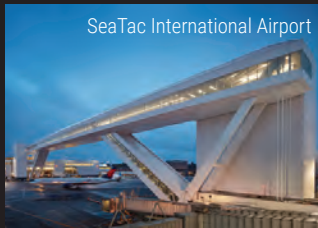
    www.oacsvcs.com



ENGINEERING ICONIC PROJECTS



Mechanical | Electrical | Technology | Acoustics | Lighting



720 3rd Avenue, Suite 1500 | Seattle, WA | 206.667.0555

MENTORS

INDIVIDUAL TEAM LEADERS IN BOLD

TUESDAY BELLEVUE TEAM 1

Brandon Gormley, Cornerstone
Dan Lampert, Cornerstone
Brent Robinson, DCI Engineers
Lisa Auth, DCI Engineers
David Connell, DLR Group
Miranda Otto, Dykeman
Dana Johnson, GLY Construction
Stephen Murakami, Hutteball + Oremus
Jerald Jacobson, Jacobson Consulting
Engineers
Mia Marshall, Marshall Design +
Management

Chloe Dumas, NuScale Power
Solaiman Salahi, OAC Services
Amanda Lauck, Otak
Daniel Carmody, Otak
Lindsay Martin, Otak
Lori McFarland, Otak
Shelley Santo, PCL Construction
Ethel Vural, OAC / SeaGen
Alon Abiador, Wood Harbinger
Matthew Woo, Wood Harbinger

TUESDAY BELLEVUE TEAM 2

Samuel Gebremeskel, Affiliated
Engineers
Stephen Phillips, Affiliated Engineers,
Vinay Shekar, Affiliated Engineers
Jenelle Ho, Blueline Group
Austin Edge, Design West
Kayvan Nehchiri, Design West
Daniel Polgreen, Freiheit Architecture
Josiah Cline, Freiheit Architecture
Braedon Knudtson, GLY Construction
Gavin Leaverton, GLY Construction

Jackson Whiting, GLY Construction
Kelly Carroll, GLY Construction
Lauren Gallagher, GLY Construction
Tess Wakasugi-Don, GLY Construction
Brett Conway, Mackenzie
Douglas McArthur, Mackenzie
Hannah Knoot, Mackenzie
Michael Chen, Mackenzie
Chad Simms, Magnusson Klemencic
Associates
Garrett Goudy, Navix Engineering

WEDNESDAY BELLEVUE TEAM

Jerry Lee, CKC Structural Engineers
Joel Policarpio, CKC Structural
Engineers
Caroline Do, CollinsWoerman
David Do, DLR Group
Alexander Lange, DOWL
Jacilyn Hayden, DOWL
Christian Waldo, Lydig Construction
Faith Willis, Mortenson
Garret Parsons, Mortenson
Maddy Haut, Mortenson

Nicole Duesterhaus, Mortenson
Paige Adkinson, Mortenson
Shirish Kavitate, Mortenson
Steven Larson, Mortenson
Taylor Sutton, Mortenson
Craig Welton, Ross & Baruzzini
Stephen Forner, Trane
Brice Cobean, Valley Electric
Joseph Tremblay, Valley Electric
Hector Miranda, Valley Electric

MENTORS

INDIVIDUAL TEAM LEADERS IN BOLD

TUESDAY TACOMA TEAM

Todd Throop, Abbott Construction
Scott Kubiszewski, DPR Construction
Theo Boyles, Howard S. Wright a Balfour
Beatty Company
Leah Engelhardt, McGranahan
Trinh Ha, Stantec

Bethany Morales, Swenson Say Faget
Karina Bovee, Swenson Say Faget
Gregory Horodyski, Tacoma Power
Justin Vena, Tunista Construction
Sarah Commet, Weddermann
Architecture

WEDNESDAY TACOMA TEAM

Caroline Burkhardt, AHBL
Michael Hager, AHBL
Tyler Martin, Auburn Mechanical
Anahita Modrek, Ferguson Architecture
Noah Cochran, GLY Construction

Jaycob Greissl, PCS Structural Solutions
Tom Motland, Retired
**Jessica Archer-Rucshner, Rice Fergus
Miller**

Invest in
Each Other

PROUD TO SUPPORT ACE
MENTOR PROGRAM

G · L · Y



MENTORS

INDIVIDUAL TEAM LEADERS IN BOLD

REQUEST FOR PROPOSAL TEAM

These mentors worked with ACE leadership to create the RFP for the 2022-2023 student project, and served as “Owner’s Representatives” all year.

Conner Hayes, Freestone Capital
Luis Martinez, Gemdale
Avra Platis, Seneca Group
Matthew White, Seneca Group

Mike Moriarty, Seneca Group
Nickolas Diede, Seneca Group
Robyn Gordon, Seneca Group

TUESDAY SEATTLE TEAM 1

Maria Adson, Abbott
Matthew Horsley, Abbott
Jacky Chan, HDR
Carolyn McCann, KPFF
Charlie Park, KPFF
Darien Schneider, KPFF
Ella Yazbeck, KPFF
Erik Lofthus, KPFF
Patrick Young, KPFF
Kaitlen Tanaka, P2S

Spenser Petherick, P2S
Catherine Bausinger, ZGF
Emily Skalka, ZGF
Emma Cantor, ZGF
Gabriel Dwisatria, ZGF
Gabrielle Kalouche, ZGF
Joel Sterling, ZGF
Julie Ramsey, ZGF
Tucker Roberts, ZGF

TUESDAY SEATTLE TEAM 2

Bryan Granados, Coffman
Joseph Albizures, Coffman
Laura Chopp, Coffman
Steven Cirone, Coffman
Amber Salahdin, CPL
Ana Perarnau, CPL
Bridget McFaul, CPL
Katherine Rand, CPL
Kelly Weiler, CPL
Kelly Lowe, CPL
Laura Lindeman, CPL
Samantha Bucich, CPL
Sean Umeda, CPL
Heather Brownlow, Harborview

Alyssa Parsons, LMN
Christopher Martin, LMN
Jennifer Sasahara, LMN
Magdiel Dahilig, LMN
Paige Xiomara Alvarez, LMN
Rachel Dinkel, LMN
Yeong Il Jo, LMN
Abdirizak Abdi, Skanska
Alexandra Vresilovic, Skanska
Amira Sherbiny, Skanska
Daniel Lee, Skanska
Dylan Prouse, Skanska
Paul Tosello, Skanska

MENTORS

INDIVIDUAL TEAM LEADERS IN BOLD

TUESDAY SEATTLE TEAM 3

Culin Thompson, BRR	Gordon Krippaehne, Howard S. Wright
Jasmine Martinez, BRR	Balfour Beatty
Steven Yang, BRR	Casey Moore, Lund Opsahl
Britton Jones, Hargis	Christopher Cattron, Lund Opsahl
David Roper, Hargis	Nate Moore, Malsam Tsang
Kedrick Sparks, Hargis	Quinn Mackenzie, Malsam Tsang
Andrew Klippert, Howard S. Wright	Joshua Shin, Quantum
Balfour Beatty	Christine Vu , Weinstein A+U
Bryce Whitehurst, Howard S. Wright	Kelsey Pierson, Weinstein A+U
Balfour Beatty	

TUESDAY SEATTLE TEAM 4

Austin Gehman, HEWITT	Saya Kajiwara, MKA
Jasmine McNeil, HEWITT	Brian Hoang, Stantec
Megan Burns, HOK	Miguel Maldonado, Stantec
Michael Murphy, MKA	Taylor Rhoads, Stantec
Nanaissa Maiga, MKA	Allison Myar, Gary Merlino Construction
Ray Yu, MKA	Thomas Ly, Venture
Ryan Thornton, MKA	Chris Chorvat, WG Clark

WEDNESDAY SEATTLE TEAM 1

Alex Young-Desmarattes, KPFF	Andrew Techico, Sellen
Justin Schmit, KPFF	Connor Anderson, Sellen
Mya Gibbs, KPFF	Molly Elrick, Sellen
Turner Solterman, KPFF	Anisha Chutani, Stantec
Zachary Mused, KPFF	Daviel Salgado, Stantec
Eleanor Wakou, Mahlum	Nicole Olaes, Stantec
Thomas Ferree-Gooding, Schultz Miller	Erik Schultz, Weber Thompson

WEDNESDAY SEATTLE TEAM 2

Chris Kelley, GLY	Katherine Martin, Miller Hull
Jane Kim, GLY	Alexander Muirhead, P2S
Nicklas Cowan, GLY	John Feiler, P2S
Christopher Hasenheyer, Hensel Phelps	Michael Thomson, P2S
Nikitha Mallela, KPFF	Ravikiran Kaur, P2S
Akshay Srinivas, Miller Hull	Rebecca Wall, Rice Fergus Miller
Anguel Atanassov, Miller Hull	Amy Broska, SMR
Casey Riske, Miller Hull	Lan Nguyen, Swenson Say Faget
Duy Dang, Miller Hull	Matthew Johnson, Swenson Say Faget
Jonathan Nelson, Miller Hull	Jeffrey Liu, Thornton Tomasetti
Julia May, Miller Hull	Becky Skondre, Wiss Janney Elstner

MENTORS

INDIVIDUAL TEAM LEADERS IN BOLD

THURSDAY SEATTLE TEAM

Gina Yama, AEI
Michelle Fouard, AEI
Nicholas Paulay, AEI
Johnson Jones, Coffman
Kyle Johnson, Coffman
Lawrence Takemoto, Coffman
Mia Pizzuto, Coffman
Michael Blanchard, Coffman
Chris Clayton, DPR
Viktoria Huber, DPR
Kellen Davis, EBD
Rashpal Bassi, EBD
Semir Halilovic, EBD

Geoffrey Gabala, HITT
Emmanuel Soria, McKinstry
Carl Dominguez, Mithun
Daniel Swaab, Mithun
Joseph Pavilonis, Mithun
K Kaczmarek, Mithun
Kerry Garikes, Mithun
Lani Lee, Mithun
Lori Manderson, Mithun
Maria Garcia Llop, Mithun
Sterling Bradby, Mithun
Tolulope Dayo, Turner

STUDENT ADVOCATES TEAM

These mentors worked one-on-one with students to improve program retention, as part of ACE's Diversity Inclusion Initiative.

Amira Sherbiny, Skanska
Andrew Techico, Sellen
Beja Ferrieri, AEI
Cheryl Jacobs, NAC Architecture
Christopher Martin, LMN
Deb Hudacek, Seneca Group
Ethel Vural, OAC/SeaGen
Jenni Denison, BCRA

Joshua Shin, Quantum
Marco Delgadillo, BCRA
Nanaissa Maiga, MKA
Shabazz Abdulkadir, Jeylani Urban
Solutions
Tess Wakasugi-Don, GLY Construction
Victor Tapia, Macdonald-Miller

SUMMER HOSTS

ACE would like to thank several Puget Sound-area firms for participating in the ACE "Summer Experience" program, so students can receive a paid, in-office "internship" during high school. Thank you to these firms:

Freiheit Architecture
DPR Construction
Hargis
Hensel Phelps
Magnusson Klemencic Associates

Miller Hull Partnership
Mortenson
Ryan Companies
Skanska
Turner Construction

SUPPORT ACE

PLEDGE YOUR SUPPORT FOR THE ACE PROGRAM

THE ACE MENTOR PROGRAM OF WASHINGTON is a 501(c)3 nonprofit.

Please accept my gift of:

- \$1,000
- \$500
- \$250
- \$100
- \$50
- OTHER: \$ _____

Payment Method:

CHECK ENCLOSED

Mail to:
ACE Mentor Program of Washington
c/o Magnusson Klemencic Associates
1301 Fifth Avenue, Suite 3200
Seattle, WA 98101

PAYPAL

Online:
Find our PayPal link at acementor.org/seattle

Name: _____

Email: _____

Questions? Contact our Executive Director, Angela Gottula, at 425-750-4522.
Thank you for your continued support!

CONNECT

CHECK OUT OUR SOCIAL MEDIA



"LIKE" US ON FACEBOOK!
FACEBOOK.COM/SEATTLEACE

FOLLOW US ON INSTAGRAM!
[@ACEMENTORSEATTLE](https://www.instagram.com/acementorseattle)



FIND US ON LINKEDIN
LINKEDIN.COM/COMPANY/SEATTLEACE

SUBSCRIBE ON YOUTUBE
SEARCH "ACE MENTOR WASHINGTON"



PO BOX 6248, EDMONDS, WA 98026
SEATTLEWA@ACEMENTOR.ORG
425-750-4522



The ACE Mentor Program plays a pivotal role in introducing young people to the world of architecture, engineering, and construction. We celebrate with you 22 years of service in the Puget Sound area.

M.

